



HARDWARE UNLIMITED

Industrial & Safety Supplies

Unit 45 4216-54ave SE
Calgary, AB
T2C 2E3

PH: 403-723-0241
email: orders@hardwareunlimited.ca
web: <https://hardwareunlimited.ca>

MATERIAL HANDLING & WAREHOUSE EQUIPMENT PROMOTION



DELUXE HAND TRUCKS



- Constructed of 1" round 14-gauge steel tubing
- Transport short to tall loads easily
- P handle ideal for one hand control
- Strong 12" x 14" x 3/16" thick nose plate
- Double welded 3/16" x 1-1/2" cross bars
 - Add a folding nose extension to be able to transport larger loads
 - Two 10" full pneumatic wheels
- Durable Kleton blue enamel finish

KLETON

Model No.	Description	Dimensions W" x H"	Promo Price
ML321	Lo-Boy Hand Truck	23 x 50	209.00
ML322	Hi-Boy Hand Truck	23 x 72	258.00

Z3400 SERIES SAFETY GLASSES

- Sporty and translucent temple design
- Streamline temple arm for best comfort
- Dual-injected rubber at the end of the temple that will not peel off easily
- Anatomically-shaped nose-piece that will adapt to most face contours
- Standard(s) Met: CSA Z94.3, ANSI Z87+
- Lens Tint: Grey/Smoke
- Lens Coating: Anti-Scratch, Polarized

ZENITH[®]
Safety Products



Model No.	Promo Price
SGW885	23.80

20" BOX FAN



- 3-speed control
- Five slim blades
- Fully assembled and ready to use
- Designed to efficiently circulate airflow to reach desired comfort levels with a three speed-settings feature
 - Top-mounted controls

MATRIX[®]
INDUSTRIAL PRODUCTS

Model No.	Promo Price
EA527	45.20

20" HIGH VELOCITY PEDESTAL FAN

- 3-speed, 120 V/60 Hz, 1/5 HP motor
- All-metal construction
- Chrome grill, black painted base
- Head tilting capability of 360°
- Adjustable height
- 6' SJT type power cord

MATRIX[®]
INDUSTRIAL PRODUCTS

Model No.	High	CFM Med	Low	Promo Price
EA289	5950	4550	3850	163.00



Pricing in effect until October 4, 2024 or while quantities last. Taxes and freight extra. Issue #SDM224070NA

Due to recent commodity and market volatility, prices are subject to change, and may vary without prior notice.



EA551

COMMERCIAL OSCILLATING PEDESTAL FANS

- 3-speed push button front control
 - Adjustable height
- Rotating or fixed air direction
 - Easy to assemble



Model No.	Dia. "	Min. Height "	Max. Height "	Promo Price
EA658	16	41	49	36.35
EA551	18	45	52	52.25

HIGH VELOCITY FLOOR FANS

- 3-speed, 120 V/60 Hz, 1/4 HP motor
 - All-metal construction
 - 3-prong plug with ground industrial wire
 - Rotates up for vertical airflow

EA290



EA528



Model No.	Dia. "	High	CFM Med	Low	Promo Price
-----------	--------	------	---------	-----	-------------

BLACK FINISH

EA528	16	2370	1950	1560	73.25
-------	----	------	------	------	-------

CHROME FINISH

EA290	18	4725	3850	2975	109.00
-------	----	------	------	------	--------



EA666

EA667



HEAVY-DUTY OSCILLATING FANS

- 3-speed, 1/3 HP
 - All-metal construction
- Pedestal model features adjustable height and heavy-duty round base for added stability
 - 9.8' SJT power cord
 - Diameter: 30"
 - Open motor



Model No.	Description	High	CFM Med	Low	Promo Price
EA666	Pedestal	13 200	7321	4758	727.00
EA667	Wall Mount	13 400	7805	5070	591.00

OSCILLATING PEDESTAL FAN

- All-metal construction
 - 6.5' SJT power cord
 - Features adjustable height and a heavy-duty round base for added stability
- Open motor & direct drive
 - Horse Power: 1/16 HP
 - Motor: 120 V/60 Hz
 - No. of Speeds: 3



Model No.	Dia.	High	CFM Med	Low	Promo Price
-----------	------	------	---------	-----	-------------

EB239	22	4500	3700	2900	164.00
-------	----	------	------	------	--------

24" ROLL-ABOUT FAN

- 3-speed, 1/5 HP, 120 V motor
- Cart-mounted fan for increased air circulation and optimal mobility
- Can be tilted/positioned to maximize ventilation
- Cart and frame configuration provides stable quiet operation
- 9.8' SJT power cord
- Open motor
- Non-Oscillating



Model No.	High	CFM Med	Low	Promo Price
EA476	10760	7770	7040	390.00

OSCILLATING DESK FANS WITH PUSH BUTTONS

- 3-speed push button control
- Rotating or fixed air direction
- Portable and easy to assemble
- Tottle resistant base

EA305



Model No.	Diameter "	Promo Price
-----------	------------	-------------

EA305	12	35.30
EA306	16	40.15

FOLDABLE PEDESTAL FAN

- Fan can be used as a pedestal fan or a floor fan
- Fully assembled fan
- All-metal construction painted black & chrome with aluminum blades
- Equipped with two casters for easy maneuverability
- HP: 1/4
- No. of Speeds: 3
- Drive System: Direct Drive
- Non-Oscillating
- Open Motor; 120 V/60Hz
- Power Cord: 9.8'



Model No.	Dia."	High	CFM Med	Low	Promo Price
EB116	24	7000	4500	3500	469.00

LIGHT INDUSTRIAL AIR CIRCULATING FANS

- All-metal construction, with densely chrome-plated guard
- Can be used in oscillating or non-oscillating mode
- 6' SJT power cord
- Open motor
- Voltage: 120 V

EA284



Model No.	Description	HP	High	CFM Med	Low	Promo Price
OSCILLATING, 3 SPEEDS						
EA282*	26" Pedestal	1/4	7525	6060	4050	285.00
EA283*	30" Pedestal	1/3	8775	7500	6780	387.00
EA284	26" Wall Mount	1/4	7525	6060	4050	268.00
EA654	30" Wall Mount	1/3	8775	7500	6780	280.00

NON OSCILLATING, 2 SPEEDS

EA657*	26" Pedestal	1/4	7700	-	6060	380.00
EA571*	30" Pedestal	1/3	8000	-	7000	290.00
EA655	26" Wall Mount	1/4	7700	-	6060	238.00
EA656	30" Wall Mount	1/3	8000	-	7000	252.00

*Features adjustable height and a heavy-duty round base for added stability

MOBILE 3-IN-1 AIR CONDITIONER



- 3-in-1 system (A/C, fan, and dehumidifier)
- Features Control panel with LED display on unit with remote control
 - Equipped with casters
 - 24 hour timer
 - Window kit included
 - Portable
 - Voltage: 115 V
 - Frequency: 60 Hz
 - Overall Dimensions: 17-1/3" W x 12-4/5" D x 27-1/3" H



Model No.	Coverage sq.ft.	BTU Rating	Cooling Speed	Promo Price
EA830	450 - 550	12000	3	644.00

MOBILE 3-IN-1 AIR CONDITIONER

- 3-in-1 system (A/C, fan, and dehumidifier)
- Features Control panel with LED display on unit with remote control
- Equipped with casters
- 24 hour timer
- Window kit included
- Portable
- Voltage: 115 V
- Frequency: 60 Hz
- Overall Dimensions: 11-13/16" W x 12-5/8" D x 27-3/16" H



Model No.	Coverage sq.ft.	BTU Rating	Cooling Speed	Promo Price
EB118	300 - 350	8000	2	499.00

ELECTRONIC WINDOW HORIZONTAL AIR CONDITIONER

- 3 fan speeds
- Washable filter
- Remote control included
- **Includes:** Window filler panel, mounting hardware
- Fits a 14" x 23-36" window opening
- Amps: 15 A
- Voltage: 115 V
- Energy Star Certification: EER 12.0
- Overall Dim. 18-1/2" W x 15-11/16" D x 13-3/8" H



Model No.	Coverage sq.ft.	BTU Rating	Promo Price
EB119	300 - 350	8000	418.00

OSCILLATING TOWER FAN

- Wide-angle oscillation
- Stable base
- Type: Pedestal
- No. of Speeds: 3
- Colour: Black
- Voltage: 120 V
- Power: 40 W
- Frequency: 60 Hz
- Overall Height: 32"



Model No.	Dia."	Promo Price
EA827	6	59.75

PORTABLE SHOP VACUUM

- Lightweight and portable
- Great for quick wet or dry pick up jobs in your home, garage, workshop or vehicle
- Attach the hose to the rear blower port to blow dirt out from those hard to reach places
- Wall-mountable design
- **Includes:** Wet/dry vacuum, 4' Hose, Crevice tool, Gulper nozzle, Wall-mounting bracket, Onboard tool storage, Reusable dry filter with ring (Type S), Foam sleeve (Type R), 2-2.5 Gallon disposable filter bag (Type B)
- Material: Polycarbonate
- Tank Capacity: 2.5 US Gal. (9.5 Litres)
- Peak HP: 2.5 HP
- Air Flow: 60 CFM
- Sealed Pressure: 53"
- Peak Air Watts: 120
- Electrical Rating: 120 V/60 Hz/8 Amps
- Cord Length: 10'
- Hose Diameter: 1.25"
- Hose Length: 4'
- Manufacturer's Warranty: 3 Years



Model No.	Promo Price
EB333	115.00

DRUM-TOP VACUUM HEAD

- For use with 55 gallon drums
- **Includes:** Vacuum head, 12' Crush-resistant hose, Claw utility nozzle, Right angle connector Ultra-Web® cartridge filter
- Type: Wet-Dry
- Motor Stage: 2-Stage
- Air Flow: 80 CFM
- Sealed Pressure: 95"
- Electrical Rating: 120 V/60 Hz/11 Amps
- Cord Length: 35'
- Hose Diameter: 1.5"
- Hose Length: 12'
- Air Watts: 230 W



Model No.	Promo Price
EB343	1015.00

GRAFFITI REMOVER GEL

- Easy-to-use with a superior blend of solvents
 - Works on oil based marks
- Removes crayon, lipstick and spray paint
 - Gel clings to vertical surfaces
 - Container Size: 20 oz.
- Container Type: Aerosol Can



Sprayway

Model No.	Promo Price
JP339	8.95

SHOP VACUUM

- Able to handle any type of mess your benchtop machines, power tools and team can put out
- Convenient rear tool accessory pack to ensure the tools you need are always right where you are
- Features a cartridge filter and dry collection filter bag for dry pickup, along with a foam filter sleeve for wet or combination pickup
 - Heavy-duty roller wheels for easier transport
- **Includes:** (1) Vacuum, (1) 7' Locking hose, (1) 10" Floor nozzle, (3) Extension wands, (1) Gulper tool, (1) Crevice tool, (1) Cartridge filter, (1) Dry collection filter bag, (1) Foam filter sleeve

shop-vac.



- Type: Wet-Dry
- Material: Stainless Steel
- Tank Capacity: 8 US Gal. (30.28 Litres)
 - Peak HP: 6 HP
- Hose Diameter: 1.25"
 - Hose Length: 7'
 - Cord Length: 6'

Model No.	Promo Price
EB352	209.00

CRAZY CLEAN® ALL PURPOSE CLEANER

- Multi-purpose cleaner for auto detailers, glass/mirror handlers, industrial maintenance, housekeeping personnel, or sign/display tradesmen
- Clinging foam cleans and deodorizes
- Removes hand prints, scuff and crayon marks, grease spots, soot stains, and smoke film
- Produces sparkling results when used on hard surfaces, on window sills, or venetian blinds
- Container Size: 20 oz.
- Container Type: Aerosol Can
- Net Weight: 19 oz.
- Colour: White
- Fragrance: Floral
- Spray Style: Solid Cone

Sprayway



Model No.	Promo Price
JL412	7.30

STAINLESS STEEL POLISH & CLEANER

- Specially formulated for use on stainless steel fixtures, equipment, or trim
 - Cleans, polishes, and protects stainless steel without scouring
- Resists fingerprints, grease, and water spatter
- Removes old or heavy accumulation of greasy film, food spatter, or oil stains
 - Container Size: 20 oz.
- Container Type: Aerosol Can
 - Net Weight: 15 oz.
 - Colour: Clear
 - Fragrance: Lemon
- Spray Style: Mist Spray



Sprayway

Model No.	Promo Price
JL410	8.20

TOWABLE PALLET CART

- Easily tow up to 3 carts at once with a towing vehicle using the heavy-duty tow bar and hitch
- Compatible with all standard wooden and plastic pallets up to a standard 48" x 48" pallet
- Features a precision-engineered Duramold™ Deck constructed of resin and metal composite that is lighter than typical steel/wood products without sacrificing strength
- Patented handle designed with variable grip heights to suit a wide range of user heights when used manually with up to two products
- Wheel Diameter: 8"
- Wheel Type: Polyolefin
- Deck Height: 12-3/8"
- Frame Material: Powder-Coated Steel
- Colour: Black



Model No.	Deck Width"	Deck Length"	Handle Height"	Capacity lbs.	Promo Price
MP735	51	54-1/2	42.5	2500	1979.00

TOWABLE PLATFORM CART

- Easily tow up to 3 carts at once with a towing vehicle using the heavy-duty tow bar and hitch
- Features a precision-engineered Duramold™ Deck constructed of resin and metal composite that is lighter than typical steel/wood products without sacrificing strength
- Patented handle with variable grip height
- Deck Dim.: 30-1/2" W x 64-1/4" L x 12-3/8" H
- Handle Height: 42.5"
- Capacity: 2500 lbs.
- Wheel Diameter: 8"
- Wheel Type: Polyolefin



Model No.	Promo Price
MP736	1697.00

FLAT SHELF HEAVY DUTY UTILITY CART

- Sturdy structural foam construction won't rust, dent, chip or peel
- High density structural resin construction
- Ergonomic handle design improves control and worker safety
- Rounded corners protect walls and furniture
- No. of Shelves: 2
- Capacity: 500 lbs. evenly distributed
- Cart Material: Structural Foam
- Wheel Material: Rubber



Model No.	Overall Dimensions			Promo Price
	W"	x	D" x H"	
ML458	25-7/8	x	43-9/10 x 33-3/10	404.00

LIGHT-DUTY UTILITY CART

- Durable plastic construction
- Flat shelves with retaining beaded edges
- No. of Shelves: 3
- 4" swivel non-marking casters
- 19" W x 34" D x 38" H
- Capacity: 200 lbs. evenly distributed



Model No.	Colour	Promo Price
MH223	Platinum	321.00

TILT TRUCKS

- Sturdy, rotationally-moulded plastic construction ensures easy manoeuvrability and dumping
- Smooth surface is easy to clean and resists pitting and corroding
- Inset wheel and axle design helps prevent damage to surfaces and equipment
- Accepted for use in Canadian food processing facilities
- Bin Material: Polyethylene
- Colour: Black



Model No.	Capacity cu. yd.	lbs.	Overall Dim. L" x W" x H"	Promo Price
MK788	1/2	450	56.75 x 28 x 38.5	897.00
MK789	1	850	72.25 x 33.5 x 43.75	1232.00

ML448

HEAVY-DUTY UTILITY CARTS

- Constructed from sturdy structural foam that will not rust, dent, chip nor splinter
 - 2-3/4" deep top shelf
- Ergonomic handle improves control and worker safety
- 5" non-marking TPR casters, two rigid, two swivel
 - Capacity: 500 lbs. evenly distributed



Model No.	Overall Dimensions			Promo Price
	W"	x	D" x H"	
ML448	17-1/8	x	39 x 33-1/4	284.00
ML450	25-1/4	x	44 x 39	355.00

GAS CYLINDER CARTS

- Choice of carts for a wide range of cylinder sizes and terrains
- Wheel Type: 10" Dia. semi-pneumatic
- Cart Material: Steel

ML414

- Capacity: 300 cu.ft. 9" Dia., cylinder
- Capacity: 400 lbs.

ML417

- Capacity: 144 cu.ft. or 244 cu.ft. oxygen, 130 cu.ft. acetylene cylinders
- Capacity: 1000 lbs.



Model No.	Base W" x D"	No. of Cylinders	Promo Price
ML414	12 x 10	1	210.00
ML417	19 x 10	2	246.00

HEAVY-DUTY SHELF CARTS

- All-welded ready to use
- Versatile for all material transport
- Cart constructed from 14-gauge steel shelves welded to 1 1/2" x 1 1/2" x 1/8" steel angle posts
- 1" diameter tubular steel handle
- Capacity: 1200 lbs. evenly distributed
- Durable Kleton blue enamel finish
- Clearance Between Shelves: 27"
- Shelf Dimensions: 24" W x 36" L
- Wheel Material: Blue Elastic Rubber
- Handle Height: 36"



Model No.	No. of Shelves	Overall Dim. W" x D" x H"	Lip Configuration	Promo Price
MB447	2	24 x 36 x 36	Lip Up	347.00
MB446	2	24 x 36 x 36	Lip Down	347.00
MB459*	3	24 x 39 x 36	Lip Up	394.00
MB458*	3	24 x 39 x 36	Lip Down	394.00

*Clearance Between Shelves: 12"

HEAVY-DUTY WOOD DOLLIES

- 1 3/4" wood top (2 x 7/8" pieces); countersunk bolts
- 4" resilient Non-marking casters
- Capacity: 1400 lbs.
- Wheel Material: Rubber
- Platform Type: Standard

KLETON



Model No.	W"	Dimensions			H"	Promo Price
		x	D"	x		
MA188	18	x	24	x	7	134.00
MD517	18	x	30	x	7	164.00

INSTITUTIONAL PLATFORM TRUCK

- Ideal truck for institutional applications - hospitals, restaurants, shopping centres, offices, industry and anywhere else a quiet ride and professional appearance is required
- 14-gauge steel deck with 2" lip underneath
- Non-skid rubber surface means product will not shift during use
- Rubber corner bumpers protect walls and furniture
- Capacity: 1000 lbs.
- Caster Placement: Corner Standard
- Caster Type: Non-Marking Rubber
- Caster Size: 5"



KLETON

Model No.	Deck Width"	Deck Length"	Promo Price
MB209	30	60	784.00

PLATFORM TRUCKS

- All-welded design 14-gauge steel base
- Two turned down lip and reinforced channels underneath
- Double welded sockets
- Removable 1 1/4" chrome handle can be placed at either end
- Capacity: 1400 lbs. evenly distributed
- Caster Placement: Corner Standard
- Wheel Diameter: 8"
- Wheel Material: Rubber
- Deck Height: 11"



Model No.	Deck Width"	Deck Length"	Handle Height"	Promo Price
MB236	24	36	39	324.00
MB244	24	48	39	360.00
MD425	30	48	39	385.00
MB252	30	60	39	455.00

KNOCKED DOWN HAND TRUCKS

- Strong, lightweight hand truck provides exceptional durability and versatility
- Weld-free construction for easy maintenance
- Frame Material: Aluminum
- Nose Plate Dimensions: 18" W x 7-1/2" D
- Wheel Material: Mold on Rubber
- Wheel Size: 8" H x 2" W
- Capacity: 500 lbs.

MO891



KLETON

Model No.	Handle Type	Overall Height"	Overall Width"	Promo Price
MO891	Dual	52	20	224.00
MO073	P-Handle	52	14	224.00
MN027	P-Handle	48	21	232.00
MN024	Continuous	48	16	208.00
MO892	Continuous	48	20	216.00

BLUE CASTERS

- High load capacity, rolls easily and quietly on all floors
- Non-marking, excellent floor protection
- Zinc chrome plated finish provides corrosion resistance
- Elastic rubber tread rejects floor debris
- Wheel Material: Rubber
- Caster Type: Rigid
- Frame Material: Steel
- Bolt Hole Spacing: 2-3/8" x 3-1/8"
- Bolt Hole Size: 3/8"
- Plate Size: 3-3/8" x 4"



ML342

KLETON

Model No.	Wheel Dia."	Cap. lbs.	Style	Tread Width"	Overall Height"	Promo Price
MO512*	3	285	Rigid	1-1/4	4-1/4	9.80
MO511*	3	285	Swivel	1-1/4	4-1/4	11.20
MO513*	3	285	Swivel with Brake	1-1/4	4-1/4	14.40
ML334	4	350	Rigid	1-3/8	5	14.00
ML333	4	350	Swivel	1-3/8	5	15.60
ML342	4	350	Swivel with Brake	1-3/8	5	19.20
ML338	5	400	Rigid	1-3/8	6	19.20
ML337	5	400	Swivel	1-3/8	6	20.90
ML345	5	400	Swivel with Brake	1-3/8	6	26.10

* Roller Bearing

HI-TEMP CASTERS

- Smooth rolling, low noise operation
- Non-marking
- Zinc chrome-plated finish provides corrosion resistance
- Superior resistance to most oils, chemicals and grease
- Wheel Material: Nylon
- Frame Material: Steel
- Tread Width: 1-3/4"
- Bolt Hole Spacing: 3" x 3-1/3"
- Bolt Hole Size: 7/16"
- Plate Size: 4" x 4-1/2"
- Max Temperature: 230°C



ML863

KLETON

Model No.	Wheel Dia."	Cap. lbs.	Style	Overall Height"	Promo Price
ML862	6	880	Rigid	7 5/8	34.10
ML861	6	880	Swivel	7 5/8	41.20
ML863	6	880	Swivel with Brake	7 5/8	44.30
ML865	8	1000	Rigid	9 1/2	45.40
ML864	8	1000	Swivel	9 1/2	53.90
ML866	8	1000	Swivel with Brake	9 1/2	56.20

POLYOLEFIN CASTERS

- Rolls easily and quietly on all floors
- Lightweight and economical
- Non-marking, easy to maintain, steam cleanable
- High impact strength
- Capacity: 250 lbs.
- Frame Material: Steel
- Tread Width: 1-1/4"
- Bolt Hole Spacing: 1-3/4" x 2-3/4"
- Bolt Hole Size: 5/16"
- Plate Size: 2-5/8" x 3-3/4"



MP578

KLETON

Model No.	Wheel Dia."	Style	Overall Height"	Promo Price
ML392	3	Rigid	4-1/2	5.80
ML391	3	Swivel	4-1/2	7.70
MP578	3	Swivel with Brake	4-1/2	10.00
ML394	4	Rigid	5-1/4	7.50
ML393	4	Swivel	5-1/4	8.60
MP579	4	Swivel with Brake	5-1/4	10.90
ML396	5	Rigid	6-1/8	8.80
ML395	5	Swivel	6-1/8	10.40
MP580	5	Swivel with Brake	6-1/8	11.70

MOLD-ON CASTERS

- Molded rubber wheel permanently bonded to spoked cast iron core
- Iron centre gives it strength while the molded rubber offers smooth and quiet operation
- Protects loads and surfaces
- Won't damage warehouse or factory floors
- Wheel Material: Rubber
- Frame Material: Steel
- Tread Width: 2"
- Bolt Hole Spacing: 2-7/8" x 3-1/3"
- Bolt Hole Size: 7/16"
- Plate Size: 4" x 4-1/2"



ML851



ML853

KLETON

Model No.	Wheel Dia."	Cap. lbs.	Style	Promo Price
ML847	5	440	Rigid	18.00
ML846	5	440	Swivel	22.40
ML850	6	550	Rigid	20.00
ML849	6	550	Swivel	24.00
ML851	6	550	Swivel with Brake	27.90
MN451	6	550	Butterfly Side	27.30
ML853	8	660	Rigid	28.70
ML852	8	660	Swivel	34.70
ML854	8	660	Swivel with Brake	36.60

DOCK LIGHT

- Built-in on-off switch
- Durable stainless steel cage for better protection of the light
- Bracket mounted for easy installation
- Arm sections are adjustable in all directions
- Extended Arm Length: 40"
- Lamp Type: LED
- Wattage: 50W
- Head Type: Metal
- Lumens: 5500

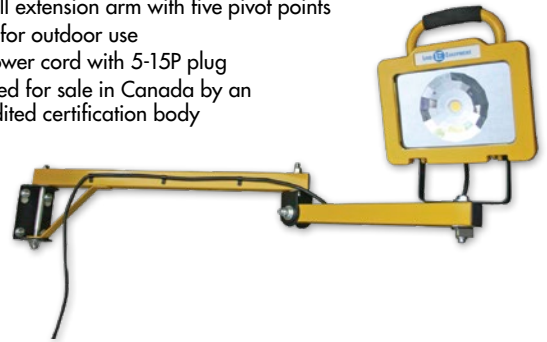


AURORA
TOOLS

Model No.	Promo Price
XI316	229.00

HEAVY-DUTY DOCK LIGHT

- LED array rated for 50 000 hours
- 40" full extension arm with five pivot points
- Rated for outdoor use
- 10' power cord with 5-15P plug
- Certified for sale in Canada by an accredited certification body



Model No.	Promo Price
XD022	269.00

LIND  EQUIPMENT

WHEEL CHOCKS

- Highly resistant to abrasion, impacts, corrosion, sun, salt, ozone and oil
- Colour: Black
- Max. Tire Diameter: 35"

KH032

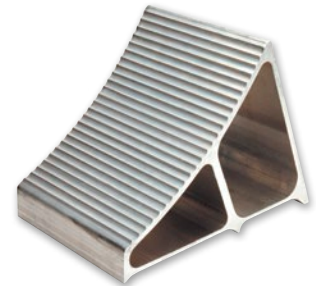


KLETON

Model No.	Description	Dimensions W" x D" x H"	Promo Price
KH032	Steel Ring on Back	6-1/2 x 9-1/2 x 7-1/2	25.50
KH600	Handle on Side	8 x 9 x 6	21.20

ALUMINUM WHEEL CHOCK

- High in strength but lightweight. Resists the effects of oil, salt, corrosion and weather. Non-sparking.
- Max. Tire Diameter: 35"
- Width: 7"
- Depth: 11-1/2"
- Height: 8"



 IDEAL WAREHOUSE
INNOVATIONS INC

Model No.	Promo Price
KH022	58.30

MOLDED DOCK BUMPERS

- Protects building and dock areas
- Shockproof, tear and freeze resistant
- Material: Rubber

KH009

KH005



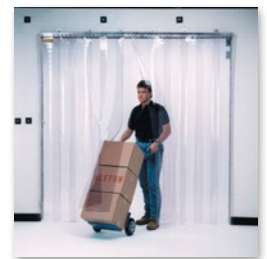
KLETON

Model No.	Overall Dimensions					Promo Price
	W"	x	D"	x	H"	
KH005	13	x	4	x	10	42.70
KH009	18	x	4	x	10	63.90

STRIP CURTAIN DOORS

- Optimal solution for open-door heat/cooling loss
- Provides ideal acoustical barrier from noisy equipment
- Transparent material allows for improved vision and reduced chance of accidents
- Includes all strips, universal mounting header, hardware to attach strips and installation instructions
- Does not include hardware for wall mounting bracket
- Strip Thickness: 0.080"
- PVC Material Type: Standard

KF022



KLETON

Model No.	Door Width'	Door Height'	Strip Width"	Promo Price
KF022	4	7	8	155.00
KF023	5	8	8	196.00
KF024	6	8	8	220.00

CHAIN HOISTS

- Lightweight steel construction
- Triple spur geared for easy lifting
- Load brake assures safety and load control
- High tensile alloy steel load chain for increased strength and durability
- Meets ASME B30.16
- Chain Material: Alloy Steel

KLETON



Model No.	Capacity	Lift'	Promo Price
LW567	1000 lbs. (0.45 tons)	10	125.00
LW568	2000 lbs. (1 tons)	10	139.00
LW569	3000 lbs. (1.5 tons)	10	179.00
LW570	4000 lbs. (2 tons)	10	199.00
LW573	1000 lbs. (0.45 tons)	20	169.00
LW574	2000 lbs. (1 tons)	20	179.00
LW575	3000 lbs. (1.5 tons)	20	247.00
LW576	4000 lbs. (2 tons)	20	262.00
LW577	6000 lbs. (3 tons)	20	372.00

ADJUSTABLE TROLLEYS WITH SAFETY PLATES

LW552

- Easily adjusts to fit various flanges, I-beams and H-beams
- Use on straight or curved track
- Can be installed or removed at any position on the beam
- Heavy-duty cast iron wheels
- Meets ASME B30.16

LW559



KLETON

Model No.	Capacity	I-Beam Flange Width"	Promo Price
LW552	1000 lbs. (0.45 tons)	2-11/16 - 5-3/8	101.00
LW553	2000 lbs. (1 tons)	3-1/8 - 6-1/4	116.00
LW554	4000 lbs. (2 tons)	3-1/8 - 6-1/4	199.00
LW555	6000 lbs. (3 tons)	3-7/16 - 7-3/8	281.00
LW556	10000 lbs. (5 tons)	4-13/16 - 9-9/16	455.00
LW559*	4000 lbs. (2 tons)	3-1/8 - 7-1/16	244.00
LW560*	6000 lbs. (3 tons)	3-7/16 - 7-3/8	314.00

*Geared trolleys include two geared wheels operated by hand chain

LEVER HOISTS

- Lightweight steel construction
- Short steel handle rotates 360° to allow operation in any position
- Load brake assures safety and load control
- High tensile alloy steel load chain for increased strength and durability
- Meets ASME B30.16
- Lift: 5'
- Chain Material: Alloy Steel

KLETON



Model No.	Capacity	Promo Price
LW562	1500 lbs. (0.75 tons)	202.00
LW563	2000 lbs. (1 tons)	244.00
LW564	3000 lbs. (1.5 tons)	262.00
LW565	6000 lbs. (3 tons)	428.00
LW566	12000 lbs. (12 tons)	636.00

HYDRAULIC PLATFORM LIFT STACKER

- Allows workers to manoeuvre and lift heavy loads safely to comfortable needed height
- Foot pedal folds safely out of the way
- Front 3" polyurethane wheels and rear 5" polyurethane casters
- Lifting Capacity: 880 lbs.
- Platform Dimensions: 23" W x 25-3/4" D
- Lowered Platform Height: 4"
- Raised Platform Height: 60"
- Operation Type: Foot Pump
- Overall Dimensions: 23" W x 39" D x 67-3/4" H



Model No.	Promo Price
MN397	1379.00

KLETON

SCISSOR LIFT TABLES

- Heavy-duty construction with captured scissor rollers for maximum stability
- Superior hydraulic systems feature an integrated pump-cylinder for maximum reliability
- Ergonomic push handle with convenient lowering control
- Quality powder-coated finish provides exceptional durability and corrosion resistance
- Includes collapsible handle
- Platform height dimensions include the wheels

MJ518



MJ522



KLETON

Model No.	Platform Height		Platform Dim.		Handle Height"	Load Cap. lbs.	Promo Price
	Lowered"	Raised"	Width"	Length"			
MJ518	8-5/8	29	17-3/4	27-1/2	37-3/8	330	603.00
MJ519	11-1/4	34-5/8	19-3/4	32	39	660	800.00
MJ520	14	51-1/4	19-3/4	35-3/4	39	770	1025.00
MJ521	11-1/4	34-5/8	19-3/4	32	39	1100	861.00
MJ522	11-1/4	36	31-7/8	63	39	1100	1472.00
MJ523	14-1/2	35-3/8	20-1/8	39-3/8	40	1650	1062.00
MJ524	15	39	20-1/8	40	39	2200	1144.00
MJ525	15	53-1/2	29-1/2	80-1/8	40	2200	2255.00
MJ526	17-1/2	59-1/8	24	48	40	1545	1800.00

ATB100 PORTABLE TOOL BOXES WITH METAL TOOL TRAY

- Durable steel construction
- Heavy-plated latches
- Inner trays in regular hand boxes
- High gloss powder coat paint finish
- Colour: Red
- Unit Capacity: 50 lbs.



TEP516

AURORA
TOOLS

Model No.	Overall Dimensions				Promo Price
	W"	x	D"	x H"	
TEP516	16	x	6	x 6-1/2	56.20
TEP336	21	x	8-3/4	x 9	95.20

INDUSTRIAL TOOL CART

- Double-walled steel construction for added strength
- Full extension ball bearings slides on all drawers
- Double drawer glides on the top drawer
- Extruded aluminum drawer handle trim
- No. of Drawers: 12
- Overall Dimensions: 56" W x 24-1/2" D x 38-1/8" H
- Unit Capacity: 1200 lbs.
- Drawer Capacity: 100 lbs.



AURORA
TOOLS

Model No.	Promo Price
TER103	2040.00

HEAVY-DUTY TOOL CART

- Heavy-duty double wall steel construction for added strength
- Quadra level ball bearing slides on all drawers
- Drawers feature soft close technology
- Heavy-duty reinforced bottom support rails for heavier loads
- Power and USB outlets on the side of the cabinet makes it quick and easy to charge your power tools and mobile devices
- No. of Drawers: 7
- Overall Dim.: 28" W x 22" D x 42-3/8" H
- Drawer Capacity: 120 lbs.
- Unit Capacity: 1400 lbs.

AURORA
TOOLS



Model No.	Promo Price
TER069	1102.00

10

UTILITY CART

- Heavy-duty steel construction
- Full extension ball bearings slides on all drawers
- High quality 4" swivel casters
- No. of Drawers: 4
- Overall Dimensions: 33" W x 18" D x 39" H
- Drawer Capacity: 100 lbs.
- Unit Capacity: 550 lbs.



AURORA
TOOLS

Model No.	Promo Price
TEP483	524.00

INDUSTRIAL TOOL CARTS

- Double wall steel construction for added strength
- Full extension ball bearings slides on all drawers
- Extruded aluminum drawer handle trim
- Non-slip drawer liners
- Drawer Capacity: 100 lbs.
- Caster Dimensions: 5" x 2" (127 mm x 51 mm)

AURORA
TOOLS

TER217

TER067



Model No.	No. of Drawers	Overall Dim. W" x D" x H"	Unit Cap. lbs.	Promo Price
TER217	6	39 x 20-4/5 x 25-4/5	1140	812.00
TER065	7	27 x 18-3/4 x 39	1400	644.00
TER067	11	41 x 18-3/4 x 39-1/3	1400	1060.00

INDUSTRIAL TOOL CHESTS

- Double wall steel construction for added strength
- Full extension ball bearings slides on all drawers
- Extruded aluminum drawer handle trim
- Powder coat scratch resistant black paint
- TER066 Drawer Capacity: 75 lbs.
- TER068 Drawer Capacity: 100 lbs.

AURORA
TOOLS

TER066



Model No.	No. of Drawers	Overall Dim. W" x D" x H"	Unit Cap. lbs.	Promo Price
TER066	4	26 x 12 x 14-1/4	375	360.00
TER068	10	41 x 17-3/4 x 19	1000	714.00

PARTS CABINETS

- Housed in all-welded galvanised steel cabinet
- I.D. card with clear plastic shield and divider included with every drawer
- New design allows 98% use of drawer space to store larger tools or materials
- Grey enamel finish

KLETON

CF283



KPC-100 PARTS CABINET

- Heavy-duty ABS grey drawers
- Drawer size: 6.4" W x 11.3" D x 2.7" H

Model No.	Dimensions W" x D" x H"	No. of Drawers	Promo Price
CF283	23 x 11-2/5 x 13-4/5	12	369.00
CF285	23 x 11-2/5 x 36-9/10	36	519.00

KPC-200 PARTS CABINET

- Heavy-duty ABS grey drawers
- Drawer size: 5.9" W x 9.8" D x 3.3" H



Model No.	Dimensions W" x D" x H"	No. of Drawers	Promo Price
CA889	21-3/10 x 10-2/5 x 36-9/10	30	494.00

KPC-300 PARTS CABINET

- Clear polystyrene drawers
- Drawer size: 5.9" W x 9.8" D x 1.6" H
- Dim. 21-3/10" W x 10-2/5" D x 36-9/10" H
- No. of Drawers: 60



Model No.	Promo Price
CA890	676.00

KPC-400 PARTS CABINET

- Heavy-duty ABS beige drawers
- Drawer size: 4.7" W x 8.6" D x 2.7" H

CF298



Model No.	Dimensions W" x D" x H"	No. of Drawers	Promo Price
CF298	23-1/10 x 8-7/10 x 13-4/5	16	261.00
CA891	17-3/10 x 8-7/10 x 25-3/5	24	311.00
CD440*	22-3/5 x 10-4/5 x 36-9/10	48	743.00

*Comes with locking door

KPC-500 PARTS CABINET

- Clear polystyrene drawers
- Drawer size: 3.5" W x 8.6" D x 2.7" H

CC453



Model No.	Dimensions W" x D" x H"	No. of Drawers	Promo Price
CF304	14 x 8-2/3 x 16-1/3	15	215.00
CF305	18-3/10 x 8-7/10 x 13-4/5	16	256.00
CC453	18-1/10 x 8-7/10 x 25-3/5	32	353.00
CC454	22-3/5 x 8-7/10 x 36-9/10	60	602.00

GEAR LOCKERS

- Lower shelf saves space as it also functions as a locker room bench
- Ventilated sides for optimal air flow
- Lockable safety box and foot locker for secure storage
- Coat rod and hooks provide ample room for hanging uniforms, bags, and other gear, while the upper and lower shelves provide plenty of flat storage area
- Overall Height: 72"
- Overall Width: 24"
- Colour: Grey
- Material: Steel

FN466

FN468



KLETON



Model No.	Description	Overall Depth"	Promo Price
FN467	W/Door	18	582.00
FN466	W/Door	24	636.00
FN469	W/O Door	18	463.00
FN468	W/O Door	24	514.00

LOCKERS

- 16-gauge frames, 24-gauge body and shelves
- Double pan construction doors, 20-gauge outer and 24-gauge inner pans
- Stainless steel recessed padlock handles
- Magnetic latch ensures door is properly fastened when closed
- Features three zinc-plated coat hooks and one shelf
- Non-perforated
- Colour: Grey
- Material: Steel
- Top Style: Basic
- Base Style: Unfinished
- Assembly Type: Rivet (Assembled)

FN465



FN460

KLETON

Model No.	No. of Tiers	Bank of	Overall Dim. W" x D" x H"	Promo Price
FN460	1	1	12 x 18 x 72	276.00
FN461	1	2	24 x 18 x 72	436.00
FN462	1	3	36 x 18 x 72	644.00
FN463	2	1	12 x 18 x 72	292.00
FN464	2	2	24 x 18 x 72	492.00
FN465	2	3	36 x 18 x 72	724.00

INDUSTRIAL ENAMEL PAINT

- Offers an economical solution to marking, colour coding and miscellaneous spray paint needs where long term quality and durability are not required
- Dries to touch in 12 minutes
- VT alkylid formulation
- Application: For use on ceramic, plaster, glass, metal, wood and most other surfaces
- Container Size: 16 oz. • Net Volume: 10 oz.
- Paint Base Type: Solvent-Based

NI478



Model No.	Colour Family	Finish	Promo Price
PAINT			
NI478	Black	Gloss	7.56
NI492	Black	Very Flat	7.56
NI475	Red	Gloss	7.56
NI474	Orange	Gloss	7.56
NI472	White	Gloss	7.56
PRIMER			
NI479	Grey	Very Flat	7.56

2300 SYSTEM TRAFFIC ZONE STRIPING PAINT

- Apply this weather-resistant coating to concrete, gravel or pavement for durability you can count on
- Creates up to 450 linear feet/ gallon with a 4" stripe
- Use with bulk-spray machine, brush or roller
- For use on: Parking lots, stadiums, curbs, athletic facilities
- Container Size: 1 gal.
- Surface Coverage: 410-540 linear feet
- Series: High Performance 2300

KP405



RUST-OLEUM

Model No.	Colour Family	Finish	Promo Price
KP405	Yellow	Flat	61.80
KP406	White	Flat	61.80
KP733	Blue	Flat	61.80

INDUSTRIAL OVERHEAD MARKING PAINT

- Overhead marking paint sprays in an upright position, dries fast and is a low odour formula
- Penetrates and clings to uneven surface
- Comes in bright, high visibility fluorescent colours
- Fast drying; dry to the touch in 10 minutes
- VOC & MIR compliant
- Container Size: 20 oz. • Net Volume: 17 oz.
- Paint Base Type: Water-Based
- **Must be ordered in multiples of 2**

KP091



Model No.	Colour	Swatch	Promo Price
KP091	Red		13.60
KP092	Orange		13.60
KP093	Green		13.60

Note: Colours may not be exactly as shown

WATER BASED MARKING PAINT

- Best resistance to early fading and chalking
- Excellent visibility on concrete, pavement, dirt, gravel, grass and more
- Container Size: 20 oz. • Net Volume: 17 oz.
- Finish: Flat
- Surface Coverage: 400 Linear ft at 1 Inch
- Series: Industrial Choice M1400
- **Must be ordered in multiples of 3**

KP459



RUST-OLEUM

Model No.	Colour	Swatch	Promo Price
KP459	Clear		6.74
KP452	White		6.74
KP453	Red		6.74
KP455	Blue		6.74
KP456	High Visibility Yellow		6.74
KP457	Fluorescent Red-Orange		6.74
KP458	Fluorescent Green		6.74
KP454	Fluorescent Pink		6.74
KP460	Fluorescent Orange		6.74

Note: Colours may not be exactly as shown

INDUSTRIAL QUICK-MARK™ INVERTED MARKING PAINT

- Bold, bright and visible markings in one pass
- Adheres to gravel, concrete, grass and soil
- Advanced UV-resistant, fast drying formula that will not fade in extreme sun and will penetrate and adhere to hot, cold or wet surfaces
- VOC compliant
- Container Size: 20 oz. • Net Volume: 17 oz.
- **Must be ordered in multiples of 3**

NC325



KRYLON INDUSTRIAL

Model No.	Colour	Swatch	Promo Price
WATER-BASED APWA COLOURS			
NC332	Utility Yellow		6.59
NC331	Brilliant White		6.59

WATER-BASED FLUORESCENT COLOURS

NC334	Safety Red		6.59
NC335	Pink		6.59
NC336	Caution Blue		6.59
NC337	Safety Green		6.59
NC338	Red/Orange		6.59
NC333	Orange		6.59

SOLVENT-BASED APWA COLOURS

NC328	Red		7.41
NC326	Blue		7.41
NC329	Green		7.41
NC327	Bright Orange		7.41
NC325	High Visibility Yellow		7.41
NC324	Utility White		7.41

SOLVENT-BASED FLUORESCENT COLOURS

NC322	Safety Red		7.41
NC323	Neon Green		7.41
NE260	Purple		7.41
NE262	Hot Pink		7.41
NC320	Red/Orange		7.41
NC321	Orange		7.41

Note: Colours may not be exactly as shown

AURORA
TOOLS

FIBREGLASS HANDLE SHOVELS

- Durable fibreglass handle with rubber grip
- Forward turned step for extra strength
- Blade Material: Tempered Steel



Model No.	Blade Size"	Handle Type	Handle Length"	Overall Length"	Promo Price
-----------	-------------	-------------	----------------	-----------------	-------------

ROUND POINT

NJ093	11 x 8-1/2	D-Grip	32-1/2	42	22.10
TLZ465	11 x 8-1/2	Straight	36-1/2	56	23.10

SQUARE POINT

NJ094	11-1/2 x 8-1/2	D-Grip	32-1/2	42	21.45
NJ095	11-1/2 x 8-1/2	Straight	48	56	22.25

DRAIN SPADE

NJ096	16 x 6	D-Grip	28-1/2	42-1/2	19.00
--------------	--------	--------	--------	--------	--------------

GRAIN & COAL SCOOP SHOVEL

- Top-of-the-line industrial grade tools designed for intense and continuous use
- Blade Size: 17-3/8" x 12"
- Blade Material: Tempered Steel
- Handle Material: Wood
- Handle Type: D-Grip
- Handle Length: 27-3/4"



Garant

Model No.	Promo Price
ND122	64.50

WALL-MOUNT HOSE REEL

- Built-in winding handle, hose guide for easy winding
- 4-ft leader hose included
- Hose Capacity: 100'
- Material: Poly-Plastic
- Dimensions: 8" x 19-1/2" x 18"



Garant

Model No.	Promo Price
NO388	56.50

PISTOL GRIP NOZZLES

- Continuous-spray stainless steel clip
- Rear-Trigger
- Threaded for accessories

AURORA
TOOLS



Model No.	Max. Pressure PSI	Water	Insulated	Body Material	Promo Price
-----------	-------------------	-------	-----------	---------------	-------------

VINYL MOLDED COMFORT GRIP

NM814	100	Cold	No	Zinc & Vinyl	7.99
--------------	-----	------	----	--------------	-------------

HEAVY-DUTY CONSTRUCTION & COMPONENTS

NM815	100	Warm & Cold	Yes	Zinc & ABS	5.99
NM816	100	Warm & Cold	Yes	Zinc & TPR	5.40
NO590	60	Warm & Cold	No	Zinc	5.65

ERGONOMIC GRIP FOR LONGER USE

NM817	100	Hot & Cold	Yes	Zinc & TPR	8.20
--------------	-----	------------	-----	------------	-------------

CONTRACTOR DUTY RUBBER HOSES

- All weather flexibility even in sub-zero conditions: -30°C (-22°F) to +82°C (180°F)
- Kink resistant under pressure
- Excellent abrasion resistant outer cover
- 400 PSI maximum pressure
- Easy coiling after use
- Hose Diameter: 5/8"
- Couplings: Brass

AURORA
TOOLS

Model No.	Hose Length'	Promo Price
NO486	25	34.45
NO487	50	53.35
NO488	100	93.25



HYBRID GARDEN HOSES

- All weather flexibility even in sub-zero conditions: -25°C (-13°F) to +70°C (158°F)
- Lightweight, lay flat and no memory, kink resistant under pressure
- Abrasion resistant outer cover
- UV, Ozone, cracking, chemicals, and oil resistant
- 450 PSI maximum working pressure
- Hose Diameter: 5/8"
- Hose Material: Copolymer

AURORA
TOOLS

Model No.	Hose Length'	Promo Price
NO963	50	41.35
NO964	100	82.35



Z600 SERIES SAFETY GLASSES

- Frameless design with extended wraparound coverage
- Scratch-resistant polycarbonate lens with UV protection
- Flexible temple design for added durability
- Near total seal of the eye provides superior protection
- Standard(s) Met: CSA Z94.3, ANSI Z87+
- **Must be ordered in multiples of 12**



Model No.	Lens Tint	Promo Price
SAW920	Clear	1.65
SGF242	Smoke	1.85

LIGHTWEIGHT HIGH-DEXTERITY CUT-RESISTANT GLOVES

- Lightweight for superior dexterity and mobility
- Foam nitrile palm coating provides improved grip
- Palm construction masks dirt and grime for longer wear
- Touchscreen compatible
- Gauge: 18
- Shell Material: HPPE, Nylon, Spandex
- Cut Resistance: ASTM ANSI Level A5



Model No.	Size	Promo Price
SGX787	Small	8.15/Pair
SGX788	Medium	8.15/Pair
SGX789	Large	8.15/Pair
SGX790	X-Large	8.15/Pair
SGX791	2X-Large	8.15/Pair



GRAND SLAM II BUMP CAPS

- For low-hazard area protection against minor bumps and lacerations
- Hard shell with crown foam pads for maximum comfort and fit
- Super-lightweight
- Well-vented for increased comfort during hot, sunny days



Model No.	Colour	Promo Price
SGC422	Navy Blue	13.29
SGC423	Red	13.29
SGC424	Grey	13.29
SGC425	Black	13.29

PREMIUM COMFORT COATED GLOVES

- 13-gauge seamless polyester knit provides ultimate dexterity and reduces hand fatigue
- Premium comfort and breathability
- Excellent dry grip
- Durable nitrile coated palm
- Gauge: 13
- EN 388 Performance Levels: 4123
- EN 420 Dexterity Level: 5
- **Must be ordered in multiples of 12**



Model No.	Size	Promo Price
SAO157	Small, 7	0.89/Pair
SAO158	Medium, 8	0.89/Pair
SAO159	Large, 9	0.89/Pair
SAO160	X-Large, 10	0.89/Pair
SAP355	2X-Large, 11	0.89/Pair



COOLING BANDANAS

- Helps fight heat stress and fatigue
- Soak 2-5 minutes in water to activate
- Remains hydrated for at least 4 hours
- One size fits all
- Material: Cotton



Model No.	Colour	Promo Price
SGO333	Blue	2.70
SGO334	Red	2.70



MEN'S UTILITY GLOVES

- All purpose glove with unlimited household and shop uses
- Easy entry, elastic cuff designed with TPR (Thermal Plastic Rubber) hook and loop closure provides a secure fit
- Two-way form fitting Spandex top increases ventilation, comfort and fit
- Interior seam stitching prevents snagging
- Reinforced Dura-Fi™ synthetic leather thumb, index and middle fingertips provide strength and protection
- Material: Synthetic Leather/Spandex/Lycra®
- **Must be ordered in multiples of 2**



Model No.	Size	Promo Price
SAN720	Small	19.85/Pair
SAN721	Medium	19.85/Pair
SAN722	Large	19.85/Pair
SAN723	X-Large	19.85/Pair
SAN724	2X-Large	19.85/Pair



TRIANGULAR REFLECTOR KIT

- Ideal for increasing visibility around disabled vehicles
- Fast and easy to set up and stow away
- Weighted base provides additional stability
- Instructions for proper use are printed on the case and on each triangle
- Kit includes three triangles and a red carry case
- Meets DOT FMVSS 125 standards



Model No.	Promo Price
SGD773	34.55

FLAGGING TAPE

- Quick and easy way to lay out boundaries
- Non-adhesive
- Brightly coloured tape offers maximum visibility
- Width: 1.1875"
- Material: Vinyl
- Must be ordered in multiples of 10



Model No.	Colour	Length'	Promo Price
SGQ805	Fluorescent Orange	164	2.25
SGQ807	Fluorescent Pink	164	2.25
SHB928	Fluorescent Green	164	2.25
SHB929	Fluorescent Yellow	164	2.25
SGQ806	Red	164	2.25
SGQ808	Blue	328	2.40

TRAFFIC CONE

- Fluorescent orange colour provides high visibility
- Interlocking cone and base
- Can withstand temperatures -10°C to 60°C
- Material: EVA Plastic with Rubber base
- Standard(s) Met: Ontario & Alberta Ministry of Transport Regulations



Model No.	Height"	Base Dim. W" x L"	Collar"	Promo Price
SGU800	28	14.17 x 14.17	4	18.00

SAFETY BATON LIGHT

- High visibility LED light source to safely direct traffic
- Durable weather resistant design with carrying strap
- Two light modes include Steady On and Flashing
- Requires (2) D batteries
- Light Colour: Orange
- Length: 21"



Model No.	Promo Price
SGW959	10.05

BARRICADE TAPE

- Warns against hazards by restricting entry to dangerous areas
- Ideal for both indoor and temporary outdoor usage
- Made of polyethylene
- Standard duty - 1.5 mil



Model No.	Message	Colour	Roll Size	Promo Price
SEK397	Caution	Black on Yellow	3" x 1000'	8.25
SEK398	"Attention"	Black on Yellow	3" x 1000'	8.25
SEK399	Danger	Black on Red	3" x 1000'	8.25
SDS739	Danger	Black on Yellow	3" x 1000'	8.25

6" TRAFFIC CONE

- 1 piece lightweight PVC construction offers flexibility and durability
- Ideal for sporting events, driver's education courses, and marking indoor hazards
- Base Dimensions: 5-7/8" W x 5-7/8" L
- Colour: Orange



Model No.	Promo Price
SCG920	4.25

HYDRATION DRINK FREEZE POPS

- By exceeding OHS recommendations for heat stress prevention, provides the body with crucial vitamins and minerals
- Caffeine-free, with no artificial colours
- Formulated and made in Canada
- Flavour: Mixed Flavours
- Format: Frozen
- Serving Size: 66 ml
- Servings/Case: 252



Model No.	Promo Price
SHI657	169.00/Case

CHILL-ITS® 6665 COOLING VESTS

- Lightweight, durable and washable
- V-neck with zipper closure
- Water-repellent liner
- Soak in cold water 2-5 minutes to activate
- Enjoy cooling relief and comfort for up to 4 hours
- Reusable, just re-soak
- High Visibility Lime-Yellow



SAP936

Model No.	Colour	Promo Price
SAP936	Medium	55.99
SAP937	Large	55.99
SAP938	X-Large	55.99
SAP939	2X-Large	55.99
SEC687	3X-Large	55.99

CHILL-ITS® 6602 COOLING TOWELS

SEI753



- A hyper-evaporative poly vinyl acetal (PVA) material that retains water while remaining dry to the touch to provide sweet cooling relief
 - Activates quickly and easily when run under water for one minute
 - Wear for hours, or wipe off for quick relief
 - Lightweight and low profile for use with hard hats and helmets
 - Reusable, just re-soak
 - Machine washable
- Must be ordered in multiples of 4



Model No.	MFG No.	Colour	Promo Price
SEB126	12420	Blue	8.49
SEI753	12439	Hi-Vis Lime	8.49
SEI754	12441	Hi-Vis Orange	8.49
SEI755	12442	Pink	8.49
SEI756	12438	Grey	8.49

GLOWEAR® 8005 HIGH VISIBILITY NECK SHADE

- Elastic design fits most hard hats, including standard and full brim designs
- Plastic clips provide secure fit
- ANSI-compliant reflective material set on contrasting background



SGP157



SGP156

Model No.	Colour	Promo Price
SGP157	Hi-Vis Orange	9.99
SGP156	Hi-Vis Lime	9.99

CHILL-ITS® 6615 COOLING DURAGS

SEC679



- Hi Cool® moisture management performance fabric transports moisture away
 - Comfortable to wear under hats, helmets, or alone
 - Absorbent terrycloth band
 - Elasticized back for a great fit
 - Machine washable

SEC675

Model No.	Colour	Promo Price
SEC675	Blue	9.49
SEC676	Green Camo	9.49
SEC678	Flames	9.49
SEC679	High Visibility Lime-Yellow	9.49
SEC680	Navy Western	9.49
SEC681	Red Western	9.49

CHILL-ITS® 6630 COOLING SKULL CAPS

- Hi Cool® moisture management performance fabric transports moisture away
- Comfortable to wear under hats, helmets, or alone
- Wide, absorbent terrycloth headband
- Machine washable
- Technology: High Performance Material



SEC705



SEC707

Model No.	Colour	Promo Price
SEC704	Blue	9.75
SEC705	Green Camo	9.75
SEC707	Flames	9.75
SEC709	Navy Western	9.75
SEC710	Red Western	9.75

Pricing in effect until October 4, 2024 or while quantities last. Taxes and freight extra. Issue #SDM224070NA

Due to recent commodity and market volatility, prices are subject to change, and may vary without prior notice.