



# HARDWARE UNLIMITED

Industrial & Safety Supplies

orders@hardwareunlimited.ca  
www.hardwareunlimited.ca

#45, 4216 - 54th Avenue SE, Calgary Alberta T2C 2E3  
Phone: (403) 723-0241 Fax: (403) 723-0251

For customer pick up orders  
please call in advance  
so we can ensure  
stock availability and have  
your order picked and ready!

## MATERIAL HANDLING & WAREHOUSE EQUIPMENT PROMOTION

### POLYESTER STRAPPING KIT



#### Includes:

- 1-PE555 Dispenser
- 1-PG175 5/8" x 4000' x 1400lbs strength polyester strapping
- 1-PF991 5/8" open seals, 1000/box
- 1-PF992 5/8" polyester sealer
- 1-PF993 polyester strapping tensioner
- Strapping Material: Polyester
- Fits Strapping Width: 5/8"



Model No.	Promo Price
<b>PG187</b>	<b>695.00</b>

### SALT & SAND CONTAINERS



- Waterproof and lockable which makes it ideal for many other outdoor storage uses aside from storing loose or bagged salt, sand, or ice melter
- It can also hold garden supplies, sporting goods, pool supplies, tools, garbage/recyclables, or anything else you want to safely store
- Constructed of rugged BPA-free UV-resistant polyethylene
- Built-in pockets for forklifts allow the bins to be moved without emptying them
- Capacity: 4.24 cu. ft.
- 21" L x 27" W x 26" H

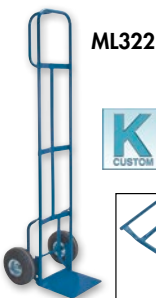


Model No.	Colour	Description	Promo Price
<b>NO614</b>	Yellow	Container	<b>132.00</b>
<b>NO615</b>	Grey	Container	<b>132.00</b>
<b>JK232</b>	Yellow	Polyethylene Scoop, 2L	<b>5.99</b>

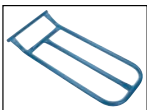


### DELUXE HAND TRUCKS

- Constructed of 1" round 14-gauge steel tubing
- Transport short to tall loads easily
- P handle ideal for one hand control
- Strong 12" x 14" x 3/16" thick nose plate
- Double welded 3/16" x 1-1/2" cross bars
  - Add a folding nose extension to be able to transport larger loads
    - Two 10" full pneumatic wheels
- Durable Kleton blue enamel finish



ML322



ML323

Model No.	Description	Dimensions	Promo Price
<b>ML321</b>	Lo-Boy Hand Truck	23" W x 50" H	<b>209.00</b>
<b>ML322</b>	Hi-Boy Hand Truck	23" W x 72" H	<b>258.00</b>
<b>ML323</b>	Nose Plate	12" W x 22" D	<b>106.00</b>

### HAND CLEANERS

- Pumice scrubbers combined with gel balance cleaning performance and skin feel
- Clings to hands for easy cleaning; doesn't fall off into the sink
- VOC and NPE free
- pH balanced to leave skin feeling refreshed
- Fragrance: Cherry

JP604

JP605



Model No.	Description	Order Qty*	Promo Price
<b>JP604</b>	295.74 ml Bottle	8	<b>6.52</b>
<b>JP605</b>	2.27 L Pump Bottle	4	<b>18.38</b>
<b>JP606</b>	4.5 L Pump Bottle	2	<b>28.13</b>

\* Must be ordered in these multiples

Pricing in effect until April 12, 2024 or while quantities last. Taxes and freight extra. Issue #SDM224010NA

Due to recent commodity and market volatility, prices are subject to change, and may vary without prior notice.

## PORTABLE HEATER

- Two heat settings (1500 W and 750 W) provide full comfort and efficient operation
- Adjustable thermostat
- PTC heating element
- Tip over safety switch and thermal safety fuse
- Type: Ceramic
- Min. BTU Rating: 2560 BTU/H
- Max. BTU Rating: 5200 BTU/H
- Amperage: 6.25 A/12.5 A



Model No.	Promo Price
<b>EA599</b>	<b>58.25</b>

## PORTABLE OPEN COIL HEATER

- Two heat settings (1500 W and 1000 W)
- Provides full comfort and efficient operation
- Fully adjustable automatic thermostat
- Safety overload switch
- Power signal light
- Top mounted handle and controls
- Grounded plug and controls
- Type: Radiant Heat
- Min. BTU Rating: 3410 BTU/H
- Max. BTU Rating: 5200 BTU/H
- Amperage: 8.3 A/12.5 A



Model No.	Promo Price
<b>EA469</b>	<b>72.15</b>

## PORTABLE HEATERS

- Two heat settings (1500 W and 750 W) provide full comfort and efficient operation
- Adjustable thermostat
- Tip over safety switch and thermal safety fuse
- Min. BTU Rating: 2557 BTU/H
- Max. BTU Rating: 5115 BTU/H



EB182

EB183

Model No.	Type	Promo Price
<b>EB182</b>	Ceramic	<b>53.40</b>
<b>EB183</b>	Fan	<b>97.60</b>

## PORTABLE FAN-FORCED UTILITY HEATER

- Two heat settings (1300 W and 1500 W) provide full comfort and economic operation
- Adjustable thermostat
- Fan-only setting
- Tip over safety switch
- Built-in carrying handle with front safety guards
- Min. BTU Rating: 4435 BTU/H
- Max. BTU Rating: 5120 BTU/H
- Amperage: 10.8 A/12.5 A



Model No.	Promo Price
<b>EA598</b>	<b>51.45</b>

## PORTABLE FAN FORCED UTILITY HEATER

- Three heat settings provides full comfort and efficient operation
  - 600 W radiant
  - 900 W fan forced
- 1500 W fan forced and radiant
  - Chrome-plated safety grill
  - Automatic built-in thermostat
    - Ceramic core element
- Tip over safety switch and thermal limit
  - Min. BTU Rating: 2048 BTU/H
  - Max. BTU Rating: 5120 BTU/H
  - Amperage: 5 A/12.5 A



Model No.	Promo Price
<b>EA466</b>	<b>125.00</b>

## OSCILLATING TOWER HEATER

- Built-in over heating protection, tip over switch and power indicator light
- Adjustable thermostat
- 2 heat settings (750 W and 1500 W) provide maximum comfort
- Includes fan only setting
- Voltage: 120 V
- Type: Ceramic
- Power cord length: 6'
- Min BTU Rating : 2550 BTU/H
- Max BTU Rating: 5200 BTU/H
- Dimensions: 7.4" W x 6.9" D x 18.5" H



Model No.	Promo Price
<b>EB020</b>	<b>75.55</b>

## HEAVY-DUTY CEILING MOUNT HEATER

- Built-in ceiling bracket for easy mounting
- Automatic fan delay
- Rugged heavy-duty industrial heater
- Ideal for use in storage rooms, workshops, garages, warehousing
- Max. BTU Rating: 17060
- Min. BTU Rating: 8530
- Voltage: 240 V
- Min. Amperage: 10.41 A
- Max. Amperage: 20.83 A
- Motor Type: Open
- Plug Type: Hardwire
- Dimensions: 10-5/8" W x 12-1/2" D x 14" H



Model No.	Promo Price
<b>EA532</b>	<b>235.00</b>

## HEAVY-DUTY TILTED HEATER

- Industrial finger proof steel intake/discharge grills
- Durable metal construction with enclosed motor
- One-speed fan only function
- Built-in over heating protection
- Air flow direction adjustable from 10°-50°
- Adjustable thermostat
- Energy-saving
- Convenient carrying handle
- Forced-air heater function
- Safety shutoff function
- Max. BTU Rating: 19107 BTU/H
- Max. Temperature: 100°F
- Type: Ceramic
- Voltage: 240 V • Amperage: 23.3 A
- Wattage: 5600 W • Cord Length: 6'



Model No.	Promo Price
<b>EBO21</b>	<b>263.00</b>

## PORTABLE CERAMIC HEATER

- Two heat settings (1500 W and 900 W) provide full comfort and efficient operation
- Adjustable thermostat
- Big carry handle
- Adjustable vertical tilt angle
- Min. BTU Rating: 2560 BTU/H
- Max. BTU Rating: 5200 BTU/H
- Voltage: 120 V



Model No.	Promo Price
<b>EA650</b>	<b>91.85</b>

## PORTABLE FAN-FORCED CONVECTION HEATER

- Two heat settings (1500 W and 750 W) provide full comfort and efficient operation
- Adjustable thermostat
- Wide-angle oscillation
- Tip over safety switch and thermal limit control
- Min. BTU Rating: 2560 BTU/H
- Max. BTU Rating: 5200 BTU/H
- Amperage: 6.25 A/12.5 A



Model No.	Promo Price
<b>EA597</b>	<b>41.75</b>

## OSCILLATING HEATER

- Built-in over heating protection, tip over switch and power indicator light
- Adjustable thermostat
- 2 heat settings (750 W and 1500 W) provide maximum comfort
- Includes fan only setting
- Voltage: 120 V
- Type: Ceramic
- Min. BTU Rating: 2600 BTU/H
- Max. BTU Rating: 5200 BTU/H
- Dimensions: 6.7" W x 5" D x 9.6" H



Model No.	Promo Price
<b>EB467</b>	<b>61.25</b>

## PORTABLE SALAMANDER HEATER

- Manufactured for long lasting, this portable heater for warehouses, factories, garages, construction sites, pavilions and other open areas, raise temperature to the desired level gradually for worksite comfort
- Adjustable thermostat
- Adjustable tilt angle
- Mounted on 10" solid rubber wheels
- Over heat protection
- Easy to move to different areas of the site
- Variable speed setting, fan forced
- Max. BTU Rating: 34121 BTU/H
- Fan Motor Type: Enclosed air over, Ball bearing
- Type: Contractor
- Voltage: 240 V
- Wattage: 10080 W



Model No.	Promo Price
<b>EA786</b>	<b>1235.00</b>



PE095

## SALT & SAND SCOOPS

- Polyethylene scoop ideal for salt and sand, compost and animal feed

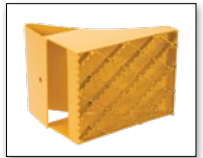
PE096



Model No.	Colour	Capacity	Promo Price
PE095	Yellow	1 gal.	22.95
PE096	White	1 gal.	23.95

## ICE CHOCK

- Formed steel
- "Tooth" like bottom assures reliable grip
- Lightweight and dependable
- Maximum holding power for snow and ice
- Powder-coated safety yellow finish for high visibility
- Max. Tire Diameter: 20"
- Dimensions: 8" W x 10-1/2" D x 9-1/4" H



Model No.	Promo Price
KH964	43.59

KLETON



ND337

## HEAVY-DUTY OUTDOOR STORAGE CONTAINERS

- Thick-walled, durable polyethylene construction
- Double-walled reinforced lid
- Molded forklift channels and recessed hand holes



NM948

Model No.	Colour	Capacity cu. ft.	Promo Price
<b>30" L X 24" W X 24" H</b>			
ND337	Yellow	5.5	199.00
ND202	Grey	5.5	199.00
<b>48" L X 24" W X 24" H</b>			
NM947	Yellow	10	299.00
NM948	Grey	10	299.00

## BROADCAST SPREADERS WITH STAINLESS STEEL HARDWARE

NN138



NN139

- Metal gear inside of the gear box
- Stainless steel hardware in the hopper and pivot shaft
  - Metal control handle
  - Rate setting control on handle for precise adjustments
- Easy three-step assembly
- Spread Width: 10'-12'
- Includes: Raincover, screen

AURORA  
TOOLS

Model No.	Load Capacity	Coverage sq.ft.	Pneumatic Tire Size"	Promo Price
NN138	70 lbs.	15000	10	263.00
NN139	125 lbs.	27000	14	376.00



## FIRESTORM™ INTENSE ICE MELTER

- Prevents refreezing even under the most challenging conditions
- Safe for children and pets, will not burn skin and gentle on vegetation
  - Container Size: 44 lbs. (20 kg)
  - Melting Point: -32°C (-25°F)
- Distinctive orange colour is easy to see, allowing you to use less while ensuring safety for pedestrians

Model No.	Promo Price
JB597	32.37/Bag



## NATURAL CHOICE™ ICE MELTER

- All-natural ice melter with an organic additive that improves its performance
- This additive also acts as a corrosion inhibitor to reduce metal fatigue
  - Eco-friendly ice melter
- Container Size: 44 lbs. (20 kg)
  - Melting Point: -24°C (-11°F)

Model No.	Promo Price
NJ140	28.67/Bag

## POLY SNOW PUSHERS

- Powder-coated steel handle for added strength
- Ergonomic poly D-grip
- Blade Material: Polypropylene

NM811



**AURORA**  
TOOLS

Model No.	Wearstrip	Blade Dim. W" x H"	Overall Length"	Promo Price
NM812	Included	21-1/4 x 9-1/4	50-1/2	<b>27.45</b>
NM811	Not Included	24-1/2 x 10-3/4	54-1/2	<b>32.45</b>

## POLY SNOW SHOVELS

- Blade Material: Polypropylene
- Handle Material: Steel
- Handle Type: D-Grip

NM809



**AURORA**  
TOOLS

Model No.	Wearstrip	Blade Dim. W" x H"	Overall Length"	Promo Price
NM809	Included	19-3/4 x 13-1/8	50-3/4	<b>31.85</b>
NM810	Not Included	19-3/4 x 13	51-3/8	<b>30.95</b>

## SCRAPERS

- Top-of-the-line industrial grade tools designed for intense and continuous use
- Handle Material: Ashwood
- Handle Type: Straight
- Handle Length: 48"
- Blade Material: Tempered steel



ND067

ND040

ND115



Model No.	MFG No.	Series	Blade"	Promo Price
ND067	NHSW7	Nordic™	7 x 5-1/2	<b>26.95</b>
ND040	AFSW7	Alpine™	7 x 6	<b>49.95</b>
ND115	YFSW9	Yukon™	8-1/2 x 6-1/4	<b>62.95</b>

## ATLAS® TEMRES GLOVES

- Breathable polyurethane coating
- Insulated acrylic liner for cold applications
- Excellent wet/dry grip
- Provides protection from liquids in cold conditions
- Gauge: Non-Knit
- Coating Style: Full Dip
- Inner Lining: Fleece
- Colour: Blue
- Coating: Polyurethane/Nitrile

SEG975



**SHOWA**

Model No.	Size	Promo Price
SEG975	Medium, 8	<b>24.75/Pair</b>
SEG976	Large, 9	<b>24.75/Pair</b>
SEG977	X-Large, 10	<b>24.75/Pair</b>
SEH643	2X-Large, 11	<b>24.75/Pair</b>

## WINTER MONKEY GRIP® GLOVES

- PVC-coated foam insulated
- Tough PVC coating stays soft when cold
- Keeps hands warm and dry
- Protects from abrasion
- Size: X-Large, 10
- Inner Lining: Foam Fleece
- Colour: Brown
- Type: Fully coated

**Ansell**



SEE953



SBA993



SBA992

Model No.	Length"	Cuff Style	Promo Price
SBA992	11	Knit	<b>10.59/Pair</b>
SBA993	10	Safety	<b>11.99/Pair</b>
SEE953*	11	Safety	<b>10.49/Pair</b>

\* Finish: Raised

## COLDWORK™ ORIGINAL® GLOVES

- Thermoplastic Rubber (TPR) closure creates a secure fit
- Heavyweight fleece construction
- Water-resistant softshell back of hand
- C40 3M™ Thinsulate™ insulation traps warm air
- Palm Material: Synthetic
- Colour: Black & Grey
- Touchscreen capable synthetic leather



SGV181

Model No.	Size	Promo Price
SGV181	Small	<b>30.95/Pair</b>
SGV182	Medium	<b>30.95/Pair</b>
SGV183	Large	<b>30.95/Pair</b>
SGV184	X-Large	<b>30.95/Pair</b>
SGV185	2X-Large	<b>30.95/Pair</b>

## PORTABLE POLY HAND TRUCK CURB RAMP

- Lightweight HDPE construction
- Two handles for easy carrying and handling
- Ergonomic method to move heavy loads over curbs or up steps
- Raised surface for excellent traction in all weather conditions
- Capacity: 1000 lbs.
- Max. Height: 8"
- Min. Height: 4-13/16"
- Overall Width: 27"
- Overall Length: 27"
- Colour: Yellow
- For Use With:  
Hand Trucks & Wheeled Carts



Model No.	Promo Price
<b>MP740</b>	<b>91.89</b>

**KLETON**

## MOLD-ON RUBBER WHEEL ALUMINUM HAND TRUCK

- Strong lightweight hand truck provides exceptional durability and versatility
- Weld-free construction for easy maintenance
- Handle Type: P-Handle
- Nose Plate Dimensions: 18" W x 7-1/2" D
- Wheel Size: 8" H x 2" W
- Capacity: 500 lbs.
- Overall Height: 48"
- Overall Width: 21"
- Colour: Silver



Model No.	Promo Price
<b>MN027</b>	<b>232.00</b>

## FLAT-FREE WHEEL ALUMINUM HAND TRUCKS

- Strong, lightweight hand truck provides exceptional durability and versatility
- Weld-free construction for easy maintenance
- Handle Type: P-Handle
- Wheel Size: 10" H x 3" W
- Capacity: 500 lbs.
- Overall Height: 52"
- Colour: Silver

MO898



**KLETON**

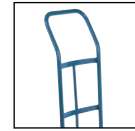
Model No.	Nose Plate Dim. W" x D"	Overall Width"	Promo Price
<b>MO898</b>	14 x 7-1/2	16	<b>254.00</b>
<b>MN029</b>	18 x 7-1/2	18	<b>257.00</b>

## ALL-WELDED HAND TRUCKS

- All welded construction
- Constructed of 1", 16-gauge steel tube
- Powder-coated paint
- Durable Kleton blue enamel finish
- Nose Plate Dimensions: 14" W x 9" D
- Wheel Material: Pneumatic
- Wheel Size: 10" H x 3" W
- Capacity: 600 lbs.
- Overall Width: 21.5"
- Steel Nose Plate ga.: 8
- Steel Tubing ga.: 16

**KLETON**

MH301



MH300



Model No.	Handle Type	Overall Height"	Promo Price
<b>MH300</b>	Dual	46	<b>81.59</b>
<b>MH301</b>	Continuous	48	<b>81.59</b>

## PNEUMATIC WHEEL ALUMINUM HAND TRUCKS

- Strong lightweight hand truck provides exceptional durability and versatility
- Weld-free construction for easy maintenance
- Wheel Size: 10" H x 3" W
- Capacity: 500 lbs.
- Colour: Silver

MN026



MN031



**KLETON**

Model No.	Handle Type	Nose Plate W" x D"	Overall Dim. H" x W"	Promo Price
<b>MN031</b>	Dual	18 x 10	52 x 18	<b>246.00</b>
<b>MN026</b>	Continuous	14 x 7-1/2	52 x 16	<b>246.00</b>

## CONVERTIBLE DELUXE HAND TRUCK

- Quickly converts from a 2-wheel hand truck to a 4-wheel platform truck
- Constructed of 1" round 14-gauge steel tubing
- Comes with 2 welded-on stair glides
- Two 10" full pneumatic wheels and two 3" bolted-on casters
- Durable Kleton blue enamel finish
- Handle Type: Continuous
- Nose Plate Dimensions: 8" W x 14" D
- Hand Truck Capacity: 600 lbs.
- Platform Truck Capacity: 800 lbs.
- Overall dim.: 14" W x 43" D x 45" H



Model No.	Promo Price
<b>ML320</b>	<b>458.00</b>

**KLETON**

## INSTITUTIONAL PLATFORM TRUCK

- Ideal truck for institutional applications - hospitals, restaurants, shopping centres, offices, industry and anywhere else a quiet ride and professional appearance is required
- 14-gauge steel deck with 2" lip underneath
- Non-skid rubber surface means product will not shift during use
- Rubber corner bumpers protect walls and furniture
- Capacity: 1000 lbs.
- Caster Placement: Corner Standard
- Caster Type: Non-Marking Rubber
- Caster Size: 5"



**KLETON**

Model No.	Deck Width"	Deck Length"	Promo Price
<b>MB209</b>	30	60	<b>784.00</b>

## HEAVY-DUTY PLATFORM TRUCK

- Steel deck made of a heavy-duty all-welded 11-gauge steel with reinforced channel formed deck
- Removable 1-1/4" chrome handle can be placed at either end
- Double-welded sockets
- Capacity: 2500 lbs.
- Caster Placement: Corner Standard
- Wheel Diameter: 8"
- Wheel Material: Nylon
- Deck Height: 11"



**KLETON**

Model No.	Deck Width"	Deck Length"	Handle Height"	Promo Price
<b>MB131</b>	24	48	40	<b>505.00</b>

## SHELF & PLATFORM TRUCK

- An efficient 2-in-1 shelf and platform truck design
- Features two front corner bumpers and a removable 11-gauge top shelf to convert to a platform truck
- Two rigid and two swivel bolted-on 5" non-marking rubber casters
- Durable Kleton blue enamel finish
- Capacity: 1300 lbs., 500 lbs. top shelf/800 lbs. bottom shelf evenly distributed
- Cart Material: Steel
- Overall Dimensions: 24" W x 36" D x 40" H



**KLETON**

Model No.	Promo Price
<b>MB391</b>	<b>515.00</b>

## FOLDING HANDLE PLATFORM TRUCK

- Move supplies, forms and light equipment around the shop or office
- Quick-release handle folds flat for easy storage
- Heavy-gauge steel construction; non-skid vinyl-coated deck
- Vinyl, wrap around bumper protects walls and furniture
- Handle Height: 33"
- Capacity: 660 lbs.
- Frame Material: Steel
- Wheel Type: 5" rubber casters



**KLETON**

Model No.	Deck Width"	Deck Length"	Promo Price
<b>MK989</b>	23	35	<b>167.00</b>

## WIRE MESH TRUCK

- Rugged all-welded steel construction, ready to use
- Designed for efficient loading/unloading and transportation of merchandise
- 14-gauge steel shelves, 1 1/2" lip up
- Frame constructed from 1 1/2" angle iron and 2" x 2" wire mesh
- No. of Shelves: 3
- Shelf Dimensions: 24" W x 39" L
- Capacity: 1200 lbs.
- Overall Length: 39"
- Overall Width: 26"
- Overall Height: 62.5"
- Handle Height: 42"
- Clearance Between Shelves: 16"
- Wheel Material: Rubber
- Wheel Diameter: 5"
- Base Length: 36"
- Base Width: 24"
- Inside Wall Height: 55"

**KLETON**



Model No.	Promo Price
<b>ML250</b>	<b>1134.00</b>

## TOWABLE PLATFORM CART

- Easily tow up to 3 carts at once with a towing vehicle using the heavy-duty tow bar and hitch
- Patented handle designed with variable grip heights to suit a wide range of user heights when used manually with up to two products
- Features a precision-engineered Duramold™ Deck constructed of resin and metal composite that is lighter than typical steel/wood products without sacrificing strength
- Patented handle with variable grip height
- Deck Dim.: 30-1/2" W x 64-1/4" L x 12-3/8" H
- Handle Height: 42.5"
- Capacity: 2500 lbs.
- Wheel Diameter: 8"
- Wheel Type: Polyolefin



Model No.	Promo Price
<b>MP736</b>	<b>1810.00</b>

## HEAVY-DUTY BRAKE PALLET TRUCK

- Heavy-duty polyurethane tread bonded to cast iron core steering wheels and rollers provide superior performance
  - Constructed with a hand brake
    - Fork Length: 48"
    - Fork Width: 6.25"
    - Frame Width: 27"
  - Capacity: 5500 lbs.
  - Frame Material: Steel
    - Raised Height: 7.75"
    - Lowered Height: 2.9"
  - 2-year limited warranty



KLETON

Model No.	Promo Price
MP611	591.00

## HYDRAULIC PALLET TRUCK

- Heavy-duty all nylon steering wheels and rollers provide superior mobility and performance
- Nylon exit roller facilitates entry and exit of pallets
- High grade 304 stainless steel is ideal for medical, food, sanitary, pharmaceutical, wet and cold applications;
- Fork Length: 48"
- Fork Width: 6-1/4"
- Frame Width: 27"
- Capacity: 5500 lbs.
- Raised Height: 7.09"
- Lowered Height: 3"
- 2-year limited warranty



KLETON

Model No.	Promo Price
MN060	2569.00

## MULTI-DIRECTIONAL HYDRAULIC PALLET TRUCK

- Transrollers permit lateral movement in addition to forward/backward
  - Heavy-duty polyurethane tread bonded to cast iron core steering wheels provide superior performance
- Double load rollers, one polyurethane tread bonded to cast iron core and one nylon for easy moving of extra heavy loads
  - 2-1/5" exit ramp facilitates exit of pallets
    - Fork Length: 48"
    - Fork Width: 6-1/4"
    - Frame Width: 27"
    - Capacity: 5500 lbs.
    - Frame Material: Steel
      - Raised Height: 7.48"
      - Lowered Height: 2.95"
    - Colour: Orange



KLETON

Model No.	Promo Price
MN062	619.00

## STOCK PICKING CARTS

- All-welded design, ready to use
- Pick and transport stock without the need for a separate ladder
- Slip-resistant steps and positive locking engagement for safety
- 14-gauge steel shelves with 1-1/2" lip, configured up
- No. of Shelves: 3
- Capacity: 1200 lbs.
- Cart Material: Steel
- Wheel Material: Rubber
- Clearance Between Shelves: 12"



KLETON

K  
CUSTOM

MD441

Model No.	Overall Dim. W" x D" x H"	Promo Price
MD441	24 x 52 x 61	654.00
MB508	24 x 64 x 78	806.00

## LUMBER CARTS

- All-welded cart is ideal for transporting long and bulky items
- Welded 14-gauge 12" x 38" steel shelf
  - Grey rubber bumpers protect walls and equipment
- Two rigid and two swivel bolted-on casters
  - Overall Length: 39"
  - Overall Width: 26"
  - Capacity: 1200 lbs.
- Wheel Material: Rubber
  - Deck Width: 24"
  - Deck Depth: 36"
- Cart Material: Steel



KLETON

MB729

Model No.	Overall Height"	Wheel Diameter"	Deck Height"	Promo Price
MB729	42	5	8	666.00
ML140	45	6	10	872.00

## KNOCKED-DOWN PANEL TRUCKS

- Move tables, drywall, plywood, and artwork with ease
- Move light to heavy duty objects at ease with (4) 5" non-marking blue elastic swivel casters
- Removable upright panel bars fit any size load
- Ships knocked-down for freight savings and damage avoidance
- Overall Height: 43"
- Overall Length: 30"
- Overall Width: 27"
- Capacity: 1000 lbs.
- Wheel Diameter: 5"
- Wheel Material: Rubber



MO523

KLETON

MO522

Model No.	Deck Type	Promo Price
MO522	Open-Deck	354.00
MO523	Carpets-Deck	442.00





**KLETON****MANUAL SCISSOR SKID LIFT**

- Closed Fork tips and reinforced chassis ensure long-lasting performance
  - Ergonomically designed and comfortable handle
  - Single cylinder for increased durability and less maintenance
- Platform Dimensions: 27" L x 45-1/4" W
  - Capacity: 3300 lbs.
  - Raised Height: 31.5"
  - Lowered Height: 3.35"
  - Frame Material: Steel
- Wheels/Rollers: Polyurethane
- Extended Mast Height: 65.5"

**Model No.****Promo Price****MP566****1140.00****HYDRAULIC PLATFORM LIFT STACKER**

- Allows workers to manoeuvre and lift heavy loads safely to comfortable needed height
- Foot pedal folds safely out of the way
- Front 3" polyurethane wheels and rear 5" polyurethane casters
- Lifting Capacity: 880 lbs.
- Platform Dimensions: 23" W x 25-3/4" D
- Lowered Platform Height: 4"
- Raised Platform Height: 60"
- Operation Type: Foot Pump
- Overall Dimensions: 23" W x 39" D x 67-3/4" H

**Model No.****Promo Price****MN397****1379.00****KLETON****HYDRAULIC FORK LIFT STACKER - VL59**

- Adjustable 4" wide x 25.5" long forks
- Two 5" polyurethane swivel casters with brake and two 3" polyurethane rigid load wheels
- Chrome plated rails and handle
- Adjustable fork width 8.5" to 19.5"
- Lifting Capacity: 880 lbs.
- Raised Height: 59"
- Lowered Height: 3.5"
- Operation Type: Foot Pump

**Model No.****Promo Price****LU511****1795.00****WESCO****SPRING-OPERATED PALLET LIFTER**

- Shock absorber and heavy-duty springs allow the top of the load to remain at a convenient height by raising and lowering the pallet as its weight changes
- Equipped with forklift pockets for easy relocation
  - Rotating top minimizes worker movement
- Ergonomic design helps prevent workplace injuries
  - Easy to assemble
    - Platform dim.: 43-5/8" L x 43-5/8" W
    - Base frame dim.: 45-1/4" L x 36-3/4" W
  - Capacity: 4400 lbs.
  - Frame Material: Steel
  - Lowered Height: 9.5"
  - Raised Height: 27.75"

**Model No.****Promo Price****MO787****2089.00****KLETON****HYDRAULIC SCISSOR LIFT TABLES**

- Hydraulic foot pump raises the platform
- Ergonomic push handle with easy to use release handle to lower the platform
- Quality powder coated finish provides exceptional durability and corrosion resistance
- (2) Rigid polyurethane casters
- (2) Swivel polyurethane casters with brake
- Tread Width: 1-1/8"

**MP006****MP005****KLETON**

Model No.	Platform Dim. L" x W"	Capacity lbs.	Height" Raised	Height" Lowered	Handle Height"	Pedal Strokes To Max	Wheel Diameter"	Promo Price
<b>MP005</b>	27-1/2 x 17-3/4	330	29.13	8.85	36.8	≤ 25	4	<b>472.00</b>
<b>MP006</b>	32 x 19-3/4	660	35.4	11	39.2	≤ 36	5	<b>615.00</b>
<b>MP007</b>	35-3/4 x 19-3/4	770	51.1	13.7	38.1	≤ 60	5	<b>861.00</b>
<b>MP008</b>	32 x 19-3/4	1100	35.4	11	39.2	≤ 45	5	<b>718.00</b>

## DOCK LIGHT

- Built-in on-off switch
- Durable stainless steel cage for better protection of the light
- Bracket mounted for easy installation
- Arm sections are adjustable in all directions
- Extended Arm Length: 40"
- Lamp Type: LED
- Wattage: 50W
- Head Type: Metal
- Lumens: 5500



**AURORA**  
TOOLS

Model No.	Promo Price
<b>XI316</b>	<b>287.00</b>

## BOLLARDS

- Bollards can be used to protect work areas, racking and personnel both indoors and outdoors
- Black plastic caps are removable
- Includes pre-drilled mounting holes
- Powder coat paint finish
- Overall Length: 4-1/2"
- Overall Width: 4-1/2"
- Colour: Yellow
- Material: Steel



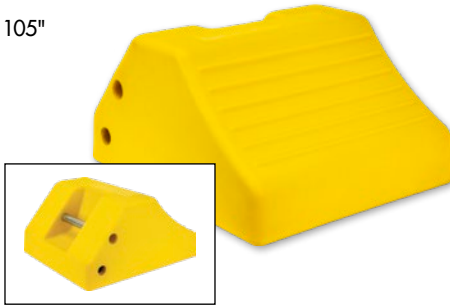
**KI293**

**KLETON**

Model No.	Overall Height"	Promo Price
<b>KI293</b>	36	<b>94.30</b>
<b>KI294</b>	42	<b>115.00</b>
<b>KI295</b>	48	<b>127.00</b>

## HEAVY-DUTY WHEEL CHOCK

- Ideal for use with ground vehicles and heavy equipment
- Material: Urethane
- Max. Tire Diameter: 105"
- Width: 15-1/2"
- Colour: Yellow
- Depth: 17-7/10"
- Height: 10"



**KLETON**

Model No.	Promo Price
<b>KI296</b>	<b>395.00</b>

## UPRIGHT PROTECTORS

- Protects industrial racking from damaging impacts that cause unsafe conditions
- Made from 1/4" thick steel
- 4 pre-drilled holes made for 1/2" anchors (not included)
- Safety yellow powder coated finish
- Overall Depth: 7"
- Overall Width: 7"
- Material: Steel



**KH858**

**KLETON**

Model No.	Overall Height"	Promo Price
<b>KH858</b>	12	<b>38.50</b>
<b>RB925</b>	18-1/4	<b>52.40</b>

## LAMINATED RUBBER CHOCK

- Designed to fit curvature of tire for a strong grip
- Extra heavy duty laminated rubber and steel construction for use with heavy utility trucks and equipment
- Load capacity: Up to 40 000 lbs.
- Max. Tire Diameter: 35"
- Overall Dim.: 8" W x 8" D x 8" H



**KLETON**

Model No.	Promo Price
<b>KH603</b>	<b>50.90</b>

## 20-GALLON SPILL KIT

- **Contains:**
  - 50 Sorbent Pads (15" x 17")
  - 4 Sorbent Socks (3" x 48")
  - 2 Sorbent Pillows (8" x 18")
  - 1 Pair Nitrile Gloves, XL (10)
  - 1 Pair Safety Goggles (One Size)
  - 1 Disposal Bag (26" x 36")
- Spill Type: Oil Only



**ZENITH**  
Safety Products

Model No.	Promo Price
<b>SEJ291</b>	<b>199.00</b>

## POLYESTER DRUM SLING

- Securely and economically lifts steel, plastic and fibre drums from 12" to 24" in diameter
- Ideal for use with a forklift truck
- Compact size of sling allows it to be stored in truck until it's needed
- Reduces drum damage which occurs when using steel handlers
- 2" x 10' endless ratchet strap tightens the reinforced polyester lifting belt around the body of the drum
- Lifting Capacity: 1000 lbs.
- Drum Capacity: 55 US gal (45 imp. gal.)

**BEN-MOR**<sup>®</sup>



**Model No.**

**Promo Price**

**DC470**

**135.00**

## FUSIBLE LINK SELF-CLOSING DRUM COVER

- Convert open top 55 US gallon/45 imp. gallon steel drums into fire-safe receptacles for combustible trash
- A replaceable fusible link assembly inside the cover melts at 165°F, automatically slamming the cover shut if a fire occurs in the drum
- Steel construction; solvent resistant, red baked-on-enamel finish
- Fits drums from 22 1/2" to 22 3/4" in diameter
- FM approved



**Justrite**<sup>™</sup>

**Model No.**

**Promo Price**

**DA097**

**294.00**

## AUTO-GRIP DRUM LIFTER

- Heavy duty, annealed, ductile iron construction
- Easy, no-tilt lifting of rimmed steel drums
- Self-energizing: the heavier the load, the tighter the grip
- Attaches to any hoist, crane or forklift using single fork hook attachment
- Drum Capacity: 55 US gal. (45 Imperial Gal.)
- Lifting Capacity: 3000 lbs./1360 kg.



**WESCO**<sup>®</sup>

**Model No.**

**Promo Price**

**DA226**

**306.00**

## SAFETY DRUM FUNNEL

- Suitable for handling flammables
- Large 10 3/4" mouth provides quick dumping
- Steel construction with 6" flame arrestor
- Hinged cover with fusible link reduces spread of vapours
- FM approved
- Funnel Capacity: 2.6 gal



**Justrite**<sup>™</sup>

**Model No.**

**Promo Price**

**DA102**

**318.00**

## OPEN HEAD DRUM LIFTER

- Suitable for use with standard steel or poly drums with at least a 3/16" chime
- Lifting arms are adjustable to work with most 55 or 30-gallon drums
- Quick and easy attachment and removal
- Attaches to any hoist, crane or forklift using single fork hook attachment
- Drum Capacity: 30 - 55 US Gal. (25 - 45 Imperial Gal.)
- Frame Material: Steel
- No. of Drums: 1
- Lifting Capacity: 1000 lbs./454 kg.



**WESCO**<sup>®</sup>

**Model No.**

**Promo Price**

**DC420**

**380.00**

## DRUM ROCKER

- Safe method of upending drums for moving, draining or storing
- Two 3" wheels and two 3" swivel casters
- Removable handle
- Powder coat finish
- Drum Capacity: 55 US gal. (45 Imperial Gal.)
- Frame Material: Knocked-Down Steel
- Wheel Material: Non Sparking
- Handle Length: 40"
- Working Load Limit: 700 lbs./318 kg
- Overall Width: 33"
- Overall Depth: 22"
- Overall Height: 20"

**KLETON**



**Model No.**

**Promo Price**

**DC443**

**121.00**

## POLYESTER STRAPPING

- Ideal for medium to heavy-duty palletizing
- Moisture-resistant, safe to handle and recyclable
- Approved by the Association of American Railroads (AAR)
- Grade: Manual
- Strap Width: 5/8"
- Strap Thickness: 0.035"
- Colour: Green
- Strength: 1400 lbs
- Sold Per: Coil
- Feet/Coil: 4000'
- Core Size: 16" x 6"



KLETON

Model No.	Promo Price
PG175	138.75

## STRAPPING DISPENSER

- Strapping cart is designed to be compatible with polyester, polypropylene and steel strapping
- The unique multi-tier discs accommodate three core strapping sizes: 16" x 3", 16" x 6" and 8" x 8"
- Rubber rollers prevent strapping from unrolling
- Cart includes large storage tray for strapping accessories
- For use with 1/2" - 3/4" strapping
- Colour: Black



KLETON

Model No.	Promo Price
PG283	299.25

## SERRATED STRAPPING SEALS

- Serrated seals for use with polyester strapping
- Type: Open
- Fits Strap Width: 5/8"
- Qty/Box: 1000



KLETON

Model No.	Promo Price
PF991	119.25/Box

## STRETCH WRAP

- For palletizing and securing large loads
- Protects goods from dirt, moisture and theft
- Type: Cast



KLETON

Model No.	Width"	Gauge	Length'	Promo Price
PG564	13	65	1500	11.50
PG563	14	80	1500	15.25
PG565	18	80	1500	19.25

## POLYESTER STRAPPING SEALER

- Heat-treated steel construction for superior strength and durability
- Prevents strapping from loosening during transit
- Long 18" handle requires less effort
- Offset jaws are longer on one side for better grip
- Specially designed for use with serrated seals



KLETON

Model No.	Fits Strap Width"	Promo Price
PF992	5/8	110.00

## STRETCH WRAP DISPENSER

- For a smooth, tight application of stretch wrap
- Tension control knob on top ensures a tight, smooth wrap; also provides a second hand grip for added stability
- Adjusts to hold rolls from 11" to 18" wide
- Material: Metal



KLETON

Model No.	Promo Price
PE354	72.50

## GARBAGE CANS

- Handle allows for easy lifting
- Lid contains the odour and contents
- Material: Plastic



JN514



Model No.	Capacity US gal.	Promo Price
JN514	15	43.28
JN513	26	58.05

## INDUSTRIAL GARBAGE BAGS

- Excellent strength and puncture resistance eliminates the need for double bagging
- Less harmful for the environment and are certified UL Ecologo by a well recognized Canadian third party certification body
- Material: Recycled Material
- Type: Open Top



JM669



Model No.	Strength	Dim. L" x W"	Qty /Box	Thickness mils	Promo Price
-----------	----------	--------------	----------	----------------	-------------

### BLACK

JM669	Utility	20 x 22	500	0.65	20.75/Box
JM670	Utility	22 x 24	500	0.65	24.80/Box
JM671	Utility	24 x 22	500	0.65	24.80/Box
JM679	X-Strong	26 x 36	125	1.2	19.50/Box
JM680	X-Strong	30 x 38	125	1.2	23.75/Box

### WHITE

JM685	Utility	20 x 22	500	0.65	26.39/Box
JM686	Utility	22 x 24	500	0.65	31.15/Box

### CLEAR

JM687	Utility	20 x 22	500	0.65	26.39/Box
JM688	Utility	22 x 24	500	0.65	31.15/Box
JM689	Strong	26 x 36	200	0.9	29.60/Box
JM690	Strong	30 x 38	200	0.9	35.75/Box
JM691	Strong	35 x 50	125	0.9	36.10/Box
JM692	Strong	42 x 48	125	0.9	40.75/Box
JM693	X-Strong	26 x 36	125	1.2	24.39/Box
JM694	X-Strong	30 x 38	125	1.2	29.60/Box

## LARGE WASTE CONTAINER



- Made of durable polyethylene that will not rust, chip or dent
- Nestable
- Handle grips allow for easy & comfortable gripping & lifting
- Lid sold separately
- Capacity: 44 US gal.
- Overall Width: 27.60"
- Diameter: 24"
- Height: 31.50"

JK676

JK677



Model No.	Description	Colour	Promo Price
JK676	Container	Grey	60.70
JK677	Dolly	Black	41.35

## ROLL OUT BIN

- Durable polyethylene construction resistant to chipping and peeling
- Easy to grip handles
- Wheels allow for the efficient movement of heavy contents
- Capacity: 65 US gal.
- Width: 23-3/4"
- Depth: 24"
- Height: 40"
- Bag Size: 50" x 50"



Model No.	Description	Colour	Promo Price
JH479	Garbage Bin	Grey	155.00

## LITTER PICKER

- Features a long, lightweight aluminum shaft that makes grabbing objects in hard to reach places easy
- Magnet located at the base of the jaws makes picking up magnetic items quick and simple
- Overall Length: 38"
- Shaft Material: Aluminum
- Handle Material: Plastic



Model No.	Promo Price
JK230	13.50

## ALL PURPOSE TRACTION AID

- Pulse Grip tread design over a large surface area provides more traction on all surfaces
- Well positioned Ice Diamond™ spikes provide more comfort under the foot and improved traction
- Improved heel fit for better performance
- Geometrically designed webbing and improved shape comfortably fit a greater variety of footwear
- Traction Type: Stud
- Traction Material: Tungsten Carbide



Boots not included



Model No.	Size	Fits Shoe Size		Promo Price
		M	W	
<b>SEB972</b>	Small	4-7	5-8	<b>33.49/Pair</b>
<b>SEB971</b>	Medium	7.5-10	8.5-11	<b>33.49/Pair</b>
<b>SEB970</b>	Large	10.5-13	11.5-13	<b>33.49/Pair</b>
<b>SEB973</b>	X-Large	13.5-15	13.5-15	<b>39.49/Pair</b>

## HEELSTOP ICE CLEATS

- Spark-resistant studs on the heel are made from long-lasting tungsten carbide to resist wear and tear
- Constructed of industrial quality, freeze resistant TR rubber which remains flexible even in the most extreme temperatures
- A unique, lightweight anti-slip traction aid that is proven to reduce workplace slips and falls in icy or snowy conditions
- Hook & loop strap allows the user to easily put on and remove the device
- Traction Type: Stud
- Traction Material: Tungsten Carbide



Boot not included



Model No.	Size	Promo Price
<b>NJM115</b>	Medium	<b>33.49/Pair</b>
<b>NJM114</b>	Large	<b>33.49/Pair</b>
<b>NJM120</b>	X-Large	<b>33.49/Pair</b>
<b>NJM122</b>	2X-Large	<b>33.49/Pair</b>

## HEAVY-DUTY TRACTION AID

- Molded in tungsten carbide spikes maximizes traction, and virtually eliminates the possibility of losing spikes
- Integral retention strap ensures a secure fit in all conditions
- Industrial grade sole made from exclusive rubber compound that offers unparalleled grip and maximum durability
- Textured 'diamond knurling' lining grips footwear and helps keep traction aids in place
- Traction Type: Stud
- Traction Material: Tungsten Carbide



Boots not included



Model No.	Size	Fits Shoe Size		Promo Price
		M	W	
<b>SGQ705</b>	Small	4-7	5-8	<b>55.99/Pair</b>
<b>SGQ706</b>	Medium	7.5-10	8.5-11	<b>55.99/Pair</b>
<b>SGQ707</b>	Large	10.5-13	11.5-13	<b>55.99/Pair</b>
<b>SGQ708</b>	X-Large	13.5-15	13.5-15	<b>62.99/Pair</b>

## INTRINSIC MID-SOLE ICE CLEATS

- One-size-fits-all winter traction solution
- Intrinsic design is certified to prevent sparking when working in areas where combustible materials may be present
- Proud to be the only fully certified intrinsic ice-cleat brand in North America
- Strategically placed ice-penetrating spikes provide maximum traction on ice and snow
- Traction Type: Stud
- Traction Material: Polymer Blend
- Colour: Yellow/Orange/Black

Boot not included



Model No.	Profile	Promo Price
<b>SGN995</b>	Original	<b>40.99/Pair</b>
<b>SGP210</b>	Low	<b>40.99/Pair</b>
<b>SGU818</b>	High	<b>40.99/Pair</b>



Boots not included



## GRIPPRO™ SPIKELESS TRACTION AIDS

- 11 (22/pair) patented hi-viz chevrons are strategically placed to increase grip and reduce the risk of slips and falls
- Specially designed treads channel water away to deliver enhanced traction
- Natural rubber material with proprietary polymer blend maintains flexibility even in sub-zero temperatures
  - Slip-on design fits snugly over boots and shoes
  - Traction Type: Grooved
  - Traction Material: Rubber

Model No.	Size	Promo Price
<b>SHA880</b>	Small/Medium	<b>43.99/Pair</b>
<b>SHA881</b>	Large/X-Large	<b>43.99/Pair</b>

## MID-SOLE SLIM ICE CLEAT

- Most often used with a traditional, defined-heel work boot
- Indoor/outdoor use
- Size: One Size
- Traction Type: Stud
- Traction Material: Tungsten Carbide
- Colour: Orange/Yellow



Model No.	Promo Price
<b>SGU819</b>	<b>32.99/Pair</b>

## ZX-30° PREMIUM FOAM PVC ACRYLIC LINED GLOVES

- Foam PVC coating offers excellent breathability, dexterity and durability, while providing a superior wet or dry grip
- 15-gauge seamless nylon/spandex shell with 100% acrylic lining for superior cold protection
- Resists abrasions, cuts and punctures
- Sanitized® coating inhibits bacteria, minimizes odour development, and promotes freshness
- Meets EN 511 standards for Extreme Cold Protection maintaining flexibility in temperatures up to -50°C
- **Must be ordered in multiples of 12**



SFQ726

ZENITH®  
Safety Products

Model No.	Size	Coating Style	Promo Price
SFQ726	8	Dipped Palm	7.25/Pair
SFQ727	9	Dipped Palm	7.25/Pair
SFQ728	10	Dipped Palm	7.25/Pair
SFQ729	11	Dipped Palm	7.25/Pair

## GOAT GRAIN STANDARD QUALITY FLEECE-LINED GLOVES

- Standard quality goat grain palm and index leather
- Split cowhide leather back and cuff construction
- Hook and loop tab for adjustable fit
- 5" cuff provides superior protection
- Exceptional dexterity
- Palm and back cotton fleece liner provides added warmth
- **Must be ordered in multiples of 12**



ZENITH®  
Safety Products

Model No.	Size	Promo Price
SEE313	Medium	9.95/Pair
SEE314	Large	10.25/Pair
SEE315	X-Large	11.90/Pair

## HIGH VISIBILITY ACRYLIC LINED GLOVES

- Natural latex palm coating
- 100% acrylic thermal lining offers superior cold protection
- Resists abrasions, cuts and punctures
- Exceptional comfort and fit
- Uncoated back permits breathability and limits perspiration
- Crinkle finish coating provides superior wet and dry grip
- Accepted for use in Canadian food processing facilities
- **Must be ordered in multiples of 12**



ZENITH®  
Safety Products

Model No.	Size	Promo Price
SEC797	7	2.35/Pair
SEC798	8	2.35/Pair
SEC799	9	2.35/Pair
SEC800	10	2.35/Pair
SEC801	11	2.35/Pair

## SPLIT COWHIDE FITTERS ACRYLIC BOA-LINED GLOVES

- Premium quality
- Provides superior warmth
- Good abrasion resistance
- Full leather tipped fingers and knuckle strap provides increased protection
- Rubberized safety cuff
- **Must be ordered in multiples of 12**



ZENITH®  
Safety Products

Model No.	Size	Promo Price
SD614	Large	4.95/Pair
SAP247	X-Large	5.20/Pair
SDL890	2X-Large	5.50/Pair

## GRAIN PIGSKIN FITTERS ACRYLIC BOA-LINED GLOVES

- Premium Quality
- Boa lining provides superior warmth
- Performs better in wet applications than cowhide grain or split leather
- Rubberized safety cuff
- **Must be ordered in multiples of 12**



ZENITH®  
Safety Products

Model No.	Size	Promo Price
SAP300	Large	6.95/Pair
SDL888	X-Large	7.25/Pair
SDL889	2X-Large	7.55/Pair

## PREMIUM GRAIN COWHIDE DRIVERS FLEECE-LINED GLOVES

- Superior abrasion resistance
- Resists oil and water well
- Excellent comfort and durability
- Provides moderate warmth
- Elastic Wrist
- **Must be ordered in multiples of 12**

SFV195



ZENITH®  
Safety Products

Model No.	Size	Promo Price
SFV195	Small	7.55/Pair
SFV196	Medium	7.65/Pair
SFV197	Large	8.35/Pair
SFV198	X-Large	8.55/Pair

## N95 PARTICULATE RESPIRATORS

- Provides excellent worker protection
- Lightweight construction for enhanced comfort
- Adjustable nose clip with soft foam nose piece provides a secure fit
- Dual-strap design
- Certification(s): NIOSH
- Size: Medium/Large
- Style: Cup
- Qty/Box: 20



Model No.	Promo Price
<b>SAS497</b>	<b>14.75/Box</b>

## EXAMINATION GRADE GLOVES

- Pure 100% premium nitrile
- Textured surface provides superior wet and dry grip
- Exceptional tactile sensitivity
- Beaded cuff for added strength
- Finish: Fully Textured
- Latex and powder-free
- Accepted for use in Canadian food processing facilities
- Non-Medical • Grade: AQL 1.5
- Length: 9.5" • Thickness: 4.5-mil
- Qty/Box: 100



SAP325

Model No.	Size	Promo Price
<b>SEA918</b>	X-Small	<b>7.29/Box</b>
<b>SAP324</b>	Small	<b>7.29/Box</b>
<b>SAP325</b>	Medium	<b>7.29/Box</b>
<b>SAP326</b>	Large	<b>7.29/Box</b>
<b>SAP327</b>	X-Large	<b>7.29/Box</b>
<b>SEA919</b>	2X-Large	<b>8.45/Box</b>

## DISPOSABLE FACE MASKS

- 3-ply construction
- Latex and graphene free
- Ear loops and metal nose bridge for easy adjustment
- Non-Medical
- Qty/Box: 50



Model No.	Promo Price
<b>SGX679</b>	<b>3.95/Box</b>

## DISPOSABLE FACESHIELD WITH HEAD GEAR

- Distortion free face shield offers protection against splashes
- Free of latex and fibreglass
- Anti-fog, anti-static and dust-proof
- Not for industrial use
- Height: 8-5/8"
- Width: 12-1/2"
- Thickness: 0.01"
- Material: PET • Shield Tint: Clear
- **Must be ordered in multiples of 10**



Model No.	Promo Price
<b>SGU285</b>	<b>1.29</b>

## N95 PARTICULATE RESPIRATORS

- Low breathing resistance for increased wearer comfort
- Adjustable plastic nose clip and soft foam nosepiece provide a custom fit
- Certification(s): NIOSH
- Size: Medium/Large
- Style: Flat Fold



Model No.	Exhalation Valve	Qty /Box	Promo Price
<b>SDN711</b>	Without	20	<b>25.99/Box</b>
<b>SDN712</b>	With	12	<b>23.39/Box</b>

## POLYPROPYLENE HOODED COVERALLS

- Polypropylene permits breathability and comfort
- Offers protection against non-hazardous and non-toxic liquids, dust and particles
- Economical disposable option for protection in grimy work environments
- Elastic wrists, ankles and hood
- Colour: Blue • Fabric Weight: 1.33 oz/m<sup>2</sup>
- Qty/Case: 50



Model No.	Size	Promo Price
<b>SEK356</b>	Medium	<b>3.19/Ea.</b>
<b>SEK357</b>	Large	<b>3.19/Ea.</b>
<b>SEK358</b>	X-Large	<b>3.19/Ea.</b>
<b>SEK359</b>	2X-Large	<b>3.19/Ea.</b>
<b>SEK360</b>	3X-Large	<b>3.25/Ea.</b>
<b>SEK361</b>	4X-Large	<b>3.35/Ea.</b>
<b>SEK362</b>	5X-Large	<b>3.39/Ea.</b>

Pricing in effect until April 12, 2024 or while quantities last. Taxes and freight extra. Issue #SDM224010NA

Due to recent commodity and market volatility, prices are subject to change, and may vary without prior notice.