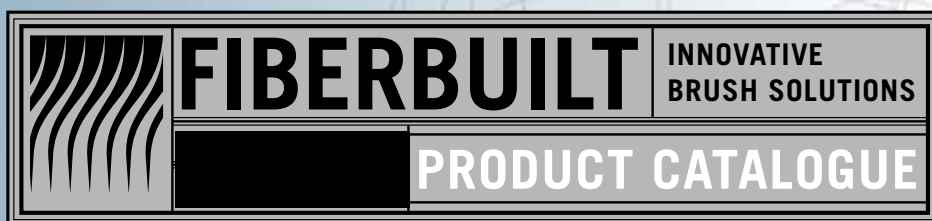




# MRO

MAINTENANCE, REPAIR, OPERATIONS



## RIG BRUSHES





### NATURAL FINE SWEEP BROOMS – 2101 SERIES

<b>2101-12</b>	12" Natural Fine Sweep Push Broom – Horsehair Blend
<b>2101-18</b>	18" Natural Fine Sweep Push Broom – Horsehair Blend
<b>2101-18A</b>	18" Natural Fine Sweep Push Broom – Horsehair Blend Assembled With #95 Handle and #1196 Brace
<b>2101-24</b>	24" Natural Fine Sweep Push Broom – Horsehair Blend
<b>2101-24A</b>	24" Natural Fine Sweep Push Broom – Horsehair Blend Assembled With #95 Handle and #1196 Brace
<b>2101-36</b>	36" Natural Fine Sweep Push Broom – Horsehair Blend
<b>2101-36A</b>	36" Natural Fine Sweep Push Broom – Horsehair Blend Assembled With #95 Handle and #1196 Brace

Recommended Handle: 95

Recommended Braces for 24" and 36" Brooms: #1196 & #15



### FINE SWEEP BROOMS – 2107 SERIES

<b>2107-12</b>	12" Fine Sweep Push Broom – Flagged & Feather-Tipped PVC
<b>2107-18</b>	18" Fine Sweep Push Broom – Flagged & Feather-Tipped PVC
<b>2107-18A</b>	18" Fine Sweep Push Broom – Flagged & Feather-Tipped PVC Assembled With #95 Handle and #1196 Brace
<b>2107-24</b>	24" Fine Sweep Push Broom – Flagged & Feather-Tipped PVC
<b>2107-24A</b>	24" Fine Sweep Push Broom – Flagged & Feather-Tipped PVC Assembled With #95 Handle and #1196 Brace
<b>2107-36</b>	36" Fine Sweep Push Broom – Flagged & Feather-Tipped PVC
<b>2107-36A</b>	36" Fine Sweep Push Broom – Flagged & Feather-Tipped PVC Assembled With #95 Handle and #1196 Brace

Recommended Handle: 95

Recommended Braces for 24" and 36" Brooms: #1196 & #15



### MEDIUM SWEEP BROOMS – 2103 SERIES

<b>2103-18</b>	18" Medium Sweep Push Broom – Oil & Grease Resistant Polypropylene
<b>2103-18A</b>	18" Medium Sweep Push Broom – Oil & Grease Resistant Polypropylene – Assembled With #95 Handle and #1196 Brace
<b>2103-24</b>	24" Medium Sweep Push Broom – Oil & Grease Resistant Polypropylene
<b>2103-24A</b>	24" Medium Sweep Push Broom – Oil & Grease Resistant Polypropylene – Assembled With #95 Handle and #1196 Brace
<b>2103-36</b>	36" Medium Sweep Push Broom – Oil & Grease Resistant Polypropylene
<b>2103-36A</b>	36" Medium Sweep Push Broom – Oil & Grease Resistant Polypropylene – Assembled With #95 Handle and #1196 Brace

Recommended Handle: 95

Recommended Braces for 24" and 36" Brooms: #1196 & #15

Assembled broom with recommended #95 handle and #1196 brace.  
Applies to all brooms on this and the following page.

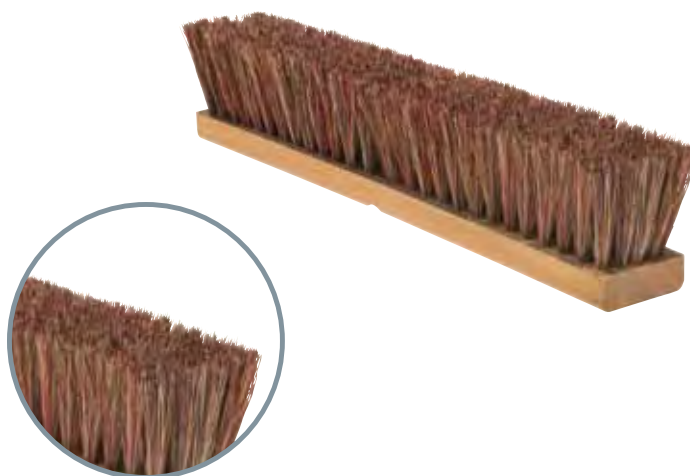


## GENERAL PURPOSE SWEEP BROOMS – 2105 SERIES

<b>2105-12</b>	12" General Purpose Sweep Push Broom – Tampico
<b>2105-18</b>	18" General Purpose Sweep Push Broom – Tampico
<b>2105-18A</b>	18" General Purpose Sweep Push Broom – Tampico Assembled With #95 Handle and #1196 Brace
<b>2105-24</b>	24" General Purpose Sweep Push Broom – Tampico
<b>2105-24A</b>	24" General Purpose Sweep Push Broom – Tampico Assembled With #95 Handle and #1196 Brace
<b>2105-36</b>	36" General Purpose Sweep Push Broom – Tampico
<b>2105-36A</b>	36" General Purpose Sweep Push Broom – Tampico Assembled With #95 Handle and #1196 Brace

Recommended Handle: 95

Recommended Braces for 24" and 36" Brooms: #1196 & #15

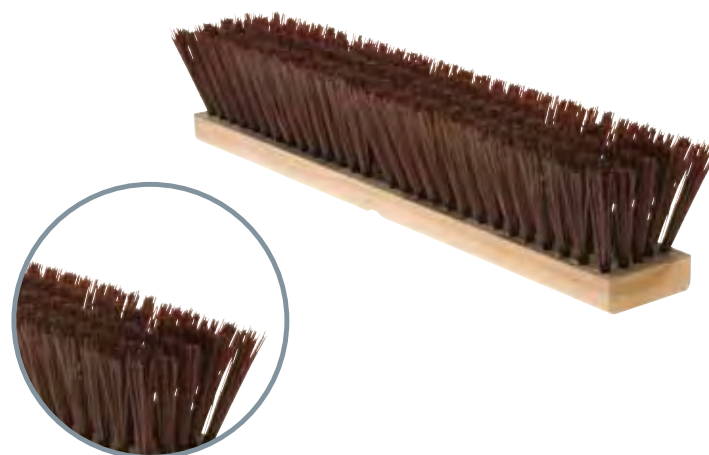


## COARSE SWEEP BROOMS – 2104 SERIES

<b>2104-18</b>	18" Coarse Sweep Push Broom – Polypropylene
<b>2104-18A</b>	18" Coarse Sweep Push Broom – Polypropylene Assembled With #95 Handle and #1196 Brace
<b>2104-24</b>	24" Coarse Sweep Push Broom – Polypropylene
<b>2104-24A</b>	24" Coarse Sweep Push Broom – Polypropylene Assembled With #95 Handle and #1196 Brace
<b>2104-36</b>	36" Coarse Sweep Push Broom – Polypropylene
<b>2104-36A</b>	36" Coarse Sweep Push Broom – Polypropylene Assembled With #95 Handle and #1196 Brace

Recommended Handle: 95

Recommended Braces for 24" and 36" Brooms: #1196 & #15

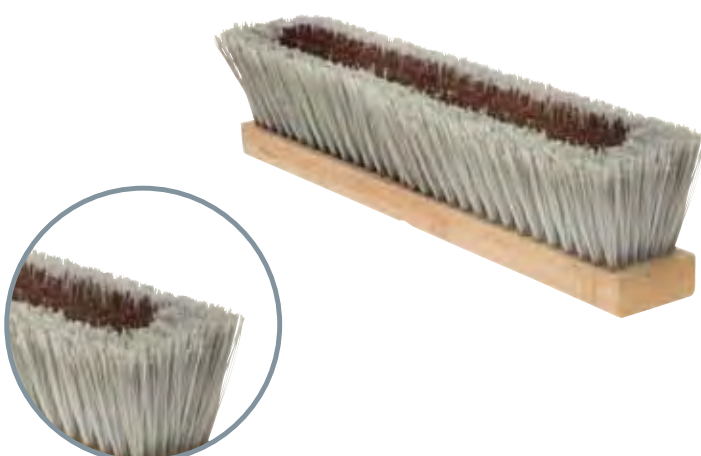


## COMBINATION SWEEP BROOMS – 2106 SERIES

<b>2106-18</b>	18" Coarse / Fine Sweep Push Broom – Polypropylene / PVC
<b>2106-18A</b>	18" Coarse / Fine Sweep Push Broom – Polypropylene / PVC Assembled With #95 Handle and #1196 Brace
<b>2106-24</b>	24" Coarse / Fine Sweep Push Broom – Polypropylene / PVC
<b>2106-24A</b>	24" Coarse / Fine Sweep Push Broom – Polypropylene / PVC Assembled With #95 Handle and #1196 Brace
<b>2106-36</b>	36" Coarse / Fine Sweep Push Broom – Polypropylene / PVC
<b>2106-36A</b>	36" Coarse / Fine Sweep Push Broom – Polypropylene / PVC Assembled With #95 Handle and #1196 Brace

Recommended Handle: 95

Recommended Braces for 24" and 36" Brooms: #1196 & #15





109-16



109-16ANB

### BARN BROOMS – 109 SERIES

109-14	14" Coarse Sweep Barn/Road Broom – Polypropylene
109-16	16" Coarse Sweep Barn/Road Broom – Polypropylene
109-16ANB	16" Coarse Sweep Barn/Road Broom – Polypropylene Assembled With #89L Handle



C-101



C-104



C-108

### CORN BROOMS

C-101	12" Corn Whisk Broom – 2 Threads
C-104	52" All-Purpose Corn Broom – 5 Threads
C-108	59" Heavy Duty Warehouse Corn Broom – 1 Wire – 3 Threads

## UPRIGHT BROOMS & ACCESSORIES

### UPRIGHT TRACK BROOMS

6213	58" Track Broom – Polypropylene
6214	60 ½" Track Broom With Spike – Polypropylene



6214

### FINE SWEEP MAGNETIC BROOMS

960E	9" Fine Sweep Magnetic Broom With 48" Handle – Swivel End Cap
999A	10" Fine Sweep Magnetic Household Angle Broom With 48" Handle – Swivel End Cap
1000L.B	9 ¾" Fine Sweep Magnetic Broom With 48" Handle – Swivel End Cap



960E

999A

1000L.B

### DUST PANS

6	12" Metal Dust Pan
---	--------------------



6



1102



1105



1109-0

### DECK BRUSHES

1102	4 1/2" Stiff Wash Brush With Plastic Flow Through Head Crimped Polypropylene
1105	4 1/2" Medium Wash Brush With Plastic Flow Through Head Tampico
1109-0	4 1/2" Soft Wash Brush With Plastic Flow Through Head Flagged PVC

Recommended Handle: 95M



1202G

1202NG



PL60GUARD

### PIPE DOPE BRUSHES

1201G	16" Pipe Dope Brush – 2" OD with Guard
1201NG	16" Pipe Dope Brush – 2" OD without Guard
1202G	16" Pipe Dope Brush – 2 1/2" OD with Guard
1202NG	16" Pipe Dope Brush – 2 1/2" OD without Guard
1203G	16" Pipe Dope Brush – 3" OD with Guard
1203NG	16" Pipe Dope Brush – 3" OD without Guard
PL60GUARD	Dope Guard



## RIG BRUSHES

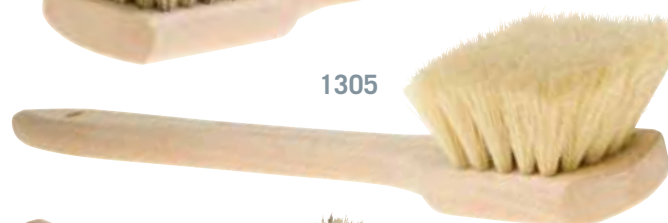
<b>1300</b>	20" Stiff Rig Scrub – Crimped Polypropylene
<b>1301</b>	20" Medium Rig Scrub – Union Fiber
<b>1305</b>	20" Medium Rig Scrub – Tampico
<b>1311</b>	12" Medium Rig Scrub – Union Fiber
<b>1315</b>	12" Medium Rig Scrub – Tampico
<b>1600</b>	5 ¼" Stiff Round Rig Scrub – Crimped Polypropylene – Bolt Type Recommended Handle # 81
<b>1601</b>	5 ¼" Medium Round Rig Scrub – Union Fiber – Bolt Type Recommended Handle # 81
<b>1704B.T.</b>	2 ½" x 9" Medium Deck & Floor Scrub – White Tampico – Bolt Type Recommended Handle # 81
<b>1705B.T.</b>	2 ½" x 9" Medium Deck & Floor Scrub – Union Fiber – Bolt Type Recommended Handle # 81



1300



1301



1305



1311



1315



1600



1601



1704B.T.



1705B.T.

# FIBERBUILT | BRUSHES

## WIRE SCRATCH, LATHE AND PAINT BRUSHES & MOPS



### WIRE SCRATCH & PAINT BRUSHES

441	4 Rows, 10 ½" Shoe Handle Style
444	10" Control Grip Metal Channel
447	4 Rows, 14" Handle
710	6" Acetate Brush – Horsehair
712	1" Disposable Boar Hair Paint Brush
714	2" Disposable Boar Hair Paint Brush
716	3" Disposable Boar Hair Paint Brush
717	4" Disposable Boar Hair Paint Brush
722	1" Disposable Polyester Paint Brush
724	2" Disposable Polyester Paint Brush
726	3" Disposable Polyester Paint Brush
727	4" Disposable Polyester Paint Brush



### COUNTER/BENCH & LATHE BRUSHES

603B	13 ¾" Counter/Bench – Tampico
604	13 ¾" Counter/Bench – Horsehair Blend
607	13 ¾" Counter/Bench – PVC Flagged
1903	10 ¾" Lathe Brush – Tampico
1904	10 ¾" Lathe Brush – Crimped Nylon



### COTTON YACHT MOPS

12Y	12 oz. Cotton Yacht Mop Head & 54" Handle
16Y	16 oz. Cotton Yacht Mop Head & 54" Handle



## WET & DRY MOPS

<b>20NB</b>	20 oz. Cotton Narrow Band Wet Mop
<b>24NB</b>	24 oz. Cotton Narrow Band Wet Mop
<b>C3536</b>	36" Cotton Dust Mop Refill

Recommended Handle: 6002 For Wet Mops

Recommended Handle: 350-36 For Dust Mop

20NB



C3536



## TWIN-BLADED FLOOR SQUEEGEES

<b>740-22</b>	22" Heavy Duty Black Moss Natural Rubber – Threaded
<b>740-22D.0.</b>	22" Heavy Duty Black Moss Natural Rubber – Drive On
<b>740-30</b>	30" Heavy Duty Black Moss Natural Rubber – Threaded
<b>740-30D.0.</b>	30" Heavy Duty Black Moss Natural Rubber – Drive On
<b>743-30</b>	30" Heavy Duty Oil Resistant Red Neoprene – Threaded
<b>743-30D.0.</b>	30" Heavy Duty Oil Resistant Red Neoprene – Drive On

Recommended Threaded Handle: 95M

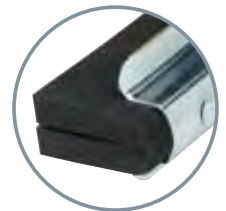
Recommended Drive On Handle: 85



Drive On



Threaded



## SINGLE-BLADED FLOOR SQUEEGEES

<b>840-18</b>	18" Straight Heavy Duty Rubber – Drive On
<b>840-24</b>	24" Straight Heavy Duty Rubber – Drive On
<b>843-24</b>	24" Curved Heavy Duty Rubber – Drive On
<b>843-36</b>	36" Curved Heavy Duty Rubber – Drive On

Recommended Handle: 85





### TAPERED BROOM HANDLES

77	15/16" x 54" Tapered Hardwood – Plain Finish
85	1 1/8" x 60" Tapered Hardwood – Lacquered
89L	1 1/8" x 54" Tapered Hardwood – Plain Finish

### TAPERED BROOM HANDLES – WITH BOLT TYPE CONNECTOR

80	1 1/8" x 60" Tapered Hardwood – Lacquered – With #91 Bolt Type Connector
81	15/16" x 54" Tapered Hardwood – Plain Finish – With #91 Bolt Type Connector



### THREADED BROOM HANDLES

84	15/16" x 54" Threaded Hardwood – Lacquered – Wood Tip
94	15/16" x 54" Hardwood Handle – Lacquered – Metal Tip
94M	15/16" x 54" Metal Handle – Plastic Tip – Swivel End Cap
95	1 1/8" x 60" Hardwood Handle – Lacquered – Metal Tip
95M	15/16" x 60" Metal Handle – Plastic Tip – Swivel End Cap
96	15/16" x 60" Hardwood Handle – Lacquered – Metal Tip
97MT	15/16" x 72" Hardwood Handle – Lacquered – Metal Tip

## HANDLES, BRACES & ATTACHMENTS

### HANDLE BRACES & ACCESSORIES

1196	Push Broom Flat Rod Brace
15	Push Broom Universal Rod Style Brace
91	Bolt Type Handle Connector for Bolt Style Broom Heads
92/S	Nylon Threaded Tip (Acid Resistant) for Short Tapered Handles
93	Metal Threaded Tip for Tapered Handles



### MOP FRAMES & HANDLES

350-36	36" Dust Mop Frame and Handle
6002	1 1/8" x 60" Quick Change Lacquered Hardwood Mop Handle Clamp Style





## THE FIBERBUILT ADVANTAGE

- Modern 50,000 square foot manufacturing facility, based in the heart of the Energy Industry
- Only engineered brush technology manufacturer in Western Canada
- Specific MRO line designed for the Oil and Gas Industry
- Stocked product for quick turn around service
- Industry leader in product quality and precision manufactured goods
- Custom product design capabilities
- Well-established product and brand in the Energy Industry
- Infrastructure positioned to facilitate significant growth
- Engineered solution provider with 50 years of experience and quality
- Global offerings and distribution capabilities
- Intellectual property and proprietary products
- Purchase directly from the manufacturer versus re-distribution



**HARDWARE UNLIMITED**

Industrial & Safety Supplies

#45, 4216 - 54th Avenue SE, Calgary AB T2C 2E3

[orders@hardwareunlimited.ca](mailto:orders@hardwareunlimited.ca)

Ph:(403) 723-0241

[www.hardwareunlimited.ca](http://www.hardwareunlimited.ca)

Authorized distributor for Fiberbuilt - Manufactured in Calgary Alberta